


THE QUEEN'S ARMY
SPECIFICATION PORTFOLIO

TAYLER SPRING
FINAL MAJOR PROJECT

CONTENT



DESIGN ROOM SPECIFICATION.....	3
CUTTING ROOM SPECIFICATION.....	7
PRODUCTION ROOM SPECIFICATION.....	11
LAY PLAN.....	21
CLOTH ANALYSIS.....	22
COMPARATIVE PRODUCT ANALYSIS.....	23
GARMENT EVALUATION.....	24
MEASUREMENT PAGE.....	25
SIZE CHARTS.....	26
BILL OF MATERIALS.....	27
MANUFACTURING PROPOSAL.....	28
CRITICAL PATH.....	29

Designer Taylor Spring

Season S/S 2022

Garment Detachable Jumpsuit

Collection 'The Queen's Army'

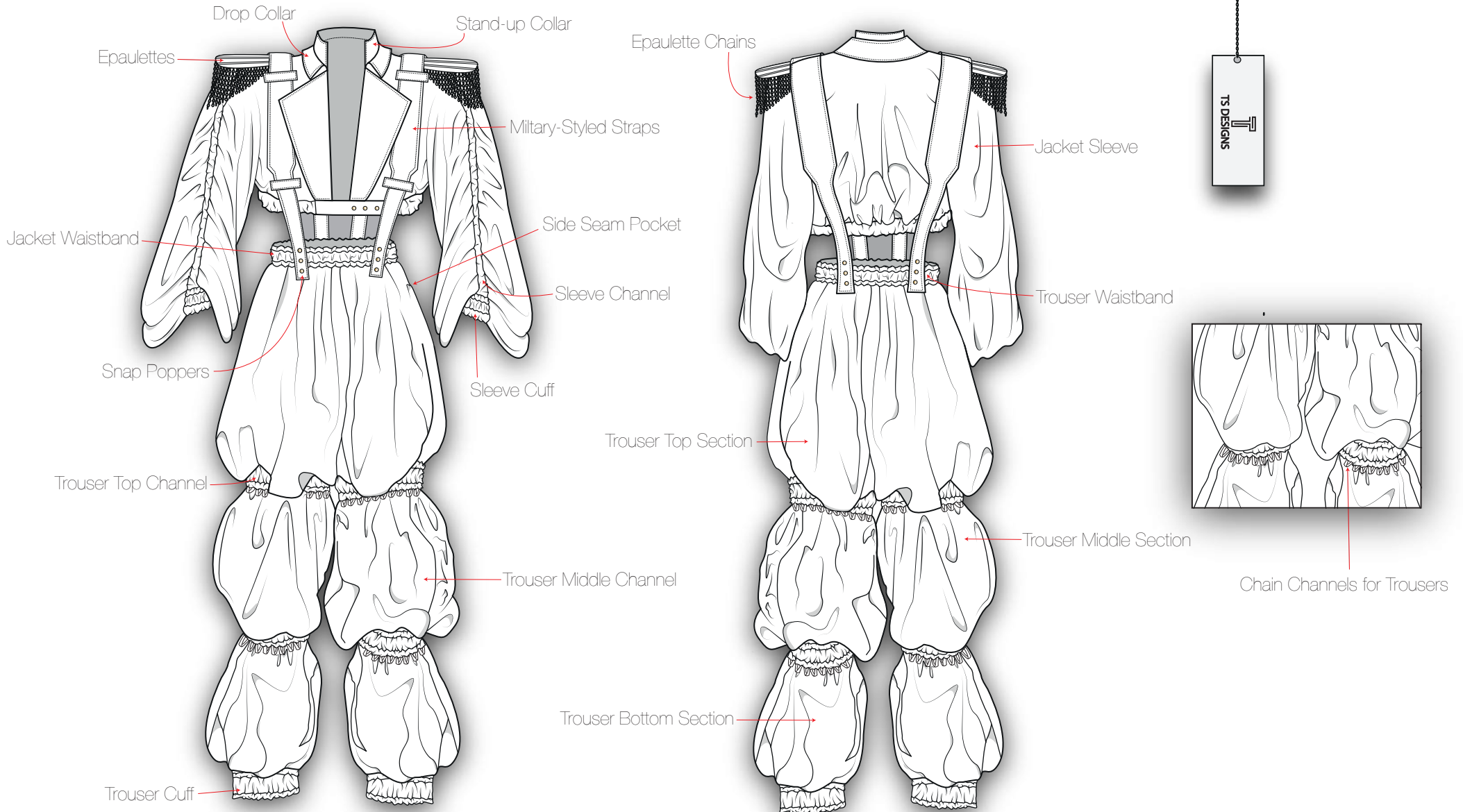
Size Range S | M | L | XL

Garment Style Number TS -021 - 2022

Page Name Design Room Spec - CAD analysis

Issue Date 10.01.2021

Last Updated 05.05.2021



Designer Taylor Spring

Season S/S 2022

Garment Detachable Jumpsuit

Collection 'The Queen's Army'

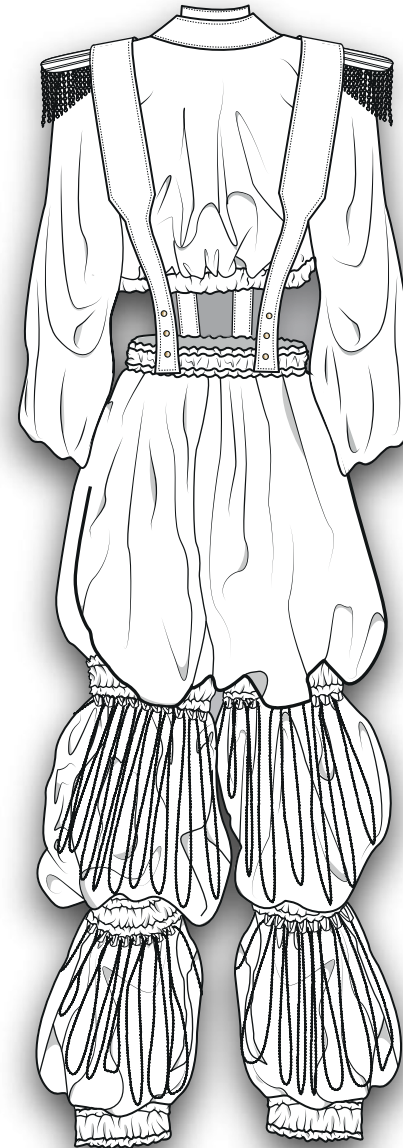
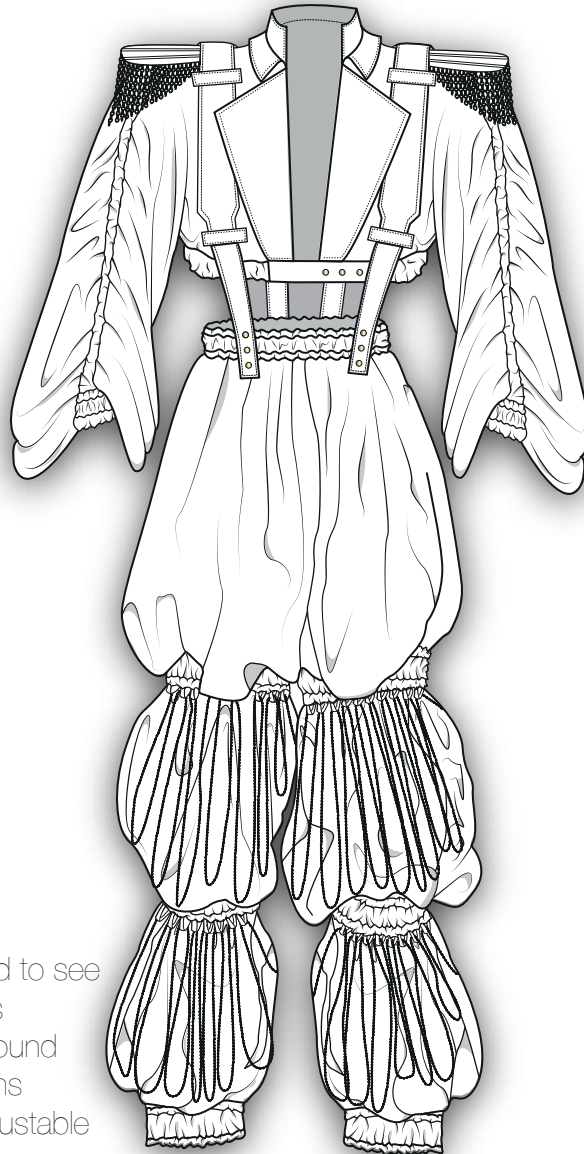
Size Range S | M | L | XL

Garment Style Number TS -021 - 2022

Page Name Design Room Spec - Chain Drape

Issue Date 10.01.2021

Last Updated 05.05.2021



This page can be used to see exactly how the chains should be draped around trouser legs - the chains are removable and adjustable

Designer Taylor Spring

Season S/S 2022

Garment Detachable Jumpsuit

Collection 'The Queen's Army'

Size Range S | M | L | XL

Garment Style Number TS -021 - 2022




Page Name Design Room Spec - CAD analysis

Issue Date 10.01.2021

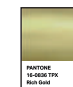

Last Updated 05.05.2021



Main Fabric

-  Stand Up Collar
Cuffs
Trousers and Sleeve Channels
Epaulette Boning Channels
Military-Styled Straps
Seam Pocket
-  Side Panel
Sleeves
Centre Front
Centre Back
Trousers Sections
Waistbands
-  Lining

Trimmings

-  Gold Chains
Gold Snap Poppers
-  Trousers Chain Channels
Strap Loops
120's Thread

Designer Taylor Spring

Season S/S 2022

Garment Detachable Jumpsuit

Collection 'The Queen's Army'

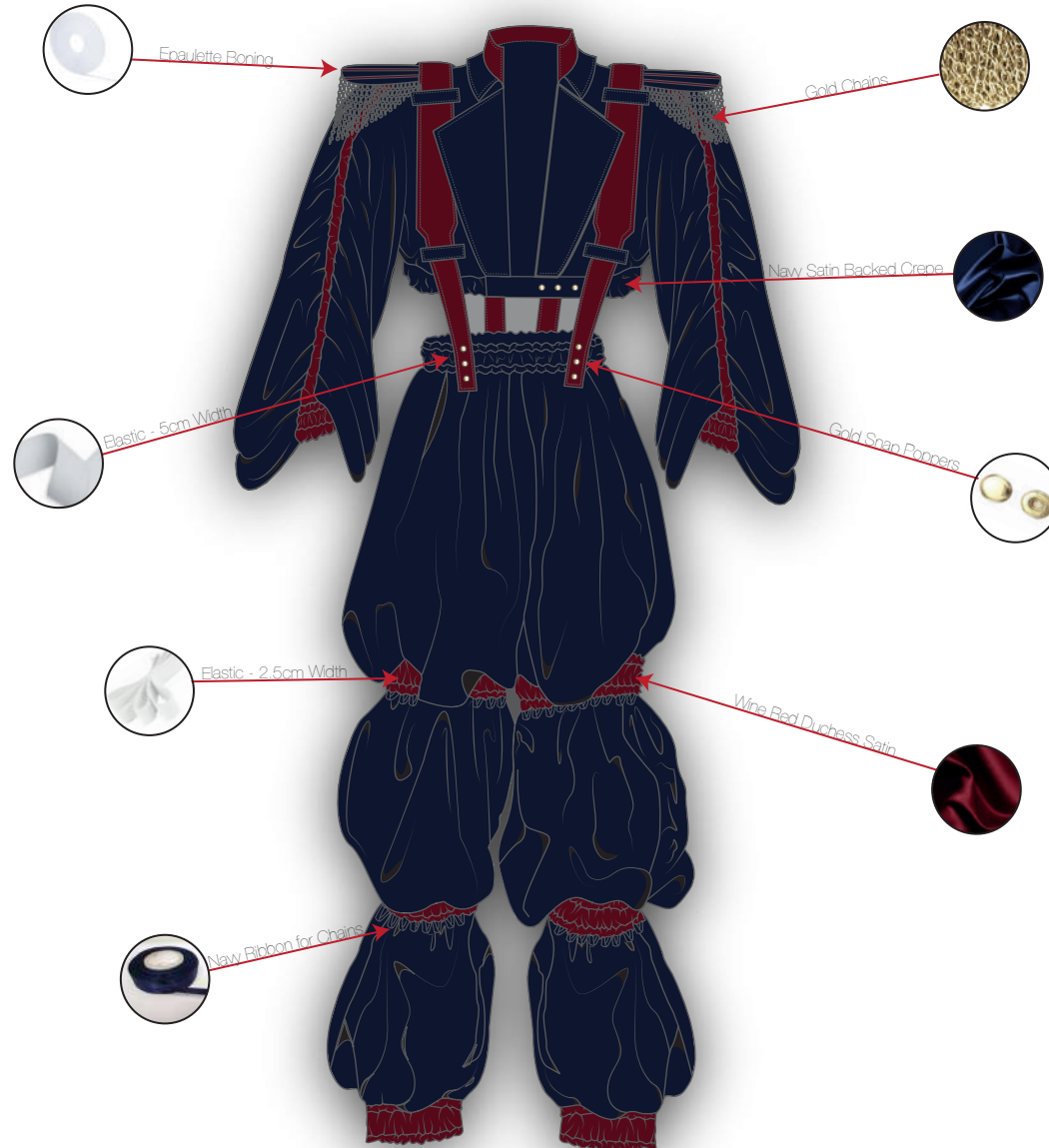
Size Range S | M | L | XL

Garment Style Number TS -021 - 2022

Page Name Design Room Spec - CAD analysis

Issue Date 10.01.2021

Last Updated 05.05.2021



Designer Taylor Spring

Season S/S 2022

Garment Detachable Jumpsuit

Collection 'The Queen's Army'

Size Range S | M | L | XL

Garment Style Number TS -021 - 2022

Page Name Cutting Room Specification

Issue Date 10.01.2021

Last Updated 10.05.2021



Outer Pieces - Trousers



Channels

- 1. Trouser Waistband
 - ↳ Cut 1 piece in Navy Satin Backed Crepe and press in half
- 2. Trouser Top Channel
 - ↳ Cut 2 pairs in Wine Red Duchess Satin
- 3. Trouser Middle Channel
 - ↳ Cut 2 pairs in Wine Red Duchess Satin
- 4. Trouser Cuff
 - ↳ Cut 1 pair in Wine Red Duchess Satin and press in half

Pieces

- 5. Trouser Top Section - CF #2
 - ↳ Cut 1 pair in Navy Satin Backed Crepe
- 6. Trouser Top Section - CF #1
 - ↳ Cut 1 pair in Navy Satin Backed Crepe
- 7. Trouser Top Section - CB #2
 - ↳ Cut 1 pair in Navy Satin Backed Crepe
- 8. Trouser Top Section - CB #1
 - ↳ Cut 1 pair in Navy Satin Backed Crepe
- 9. Trouser Middle Section - CF #2
 - ↳ Cut 1 pair in Navy Satin Backed Crepe
- 10. Trouser Middle Section - CF #1
 - ↳ Cut 1 pair in Navy Satin Backed Crepe
- 11. Trouser Middle Section - CB #2
 - ↳ Cut 1 pair in Navy Satin Backed Crepe
- 12. Trouser Middle Section - CB #1
 - ↳ Cut 1 pair in Navy Satin Backed Crepe
- 13. Trouser Bottom Section - CF #2
 - ↳ Cut 1 pair in Navy Satin Backed Crepe
- 14. Trouser Bottom Section - CF #1
 - ↳ Cut 1 pair in Navy Satin Backed Crepe
- 15. Trouser Bottom Section - CB #2
 - ↳ Cut 1 pair in Navy Satin Backed Crepe
- 16. Trouser Bottom Section - CB #1
 - ↳ Cut 1 pair in Navy Satin Backed Crepe

Designer Taylor Spring

Season S/S 2022

Garment Detachable Jumpsuit

Collection 'The Queen's Army'

Size Range S | M | L | XL

Garment Style Number TS -021 - 2022

Page Name Cutting Room Specification

Issue Date 10.01.2021

Last Updated 10.05.2021



Outer Pieces - Jacket



Pieces

- 1. Jacket Waistband
↳ Cut 1 piece in Navy Satin Backed Crepe
- 2. Bodice Centre Front Piece
↳ Cut 1 pairs in Navy Satin Backed Crepe
- 3. Bodice Centre Back Piece
↳ Cut 1 piece in Navy Satin Backed Crepe
- 4. Strap Lappets
↳ Cut 4 pairs in Navy Satin Backed Crepe
↳ Cut 2 pairs in Firm Interfacing
- 5. Stand Up Collar
↳ Cut 1 pair in Wine Red Duchess Satin
↳ Cut 1 piece in Firm Interfacing
- 6. Drop Collar
↳ Cut 1 pair in Wine Red Duchess Satin
- 7. Bodice Side Piece
↳ Cut 1 pair in Navy Satin Backed Crepe

Designer Taylor Spring

Season S/S 2022

Garment Detachable Jumpsuit

Collection 'The Queen's Army'

Size Range S | M | L | XL

Garment Style Number TS -021 - 2022

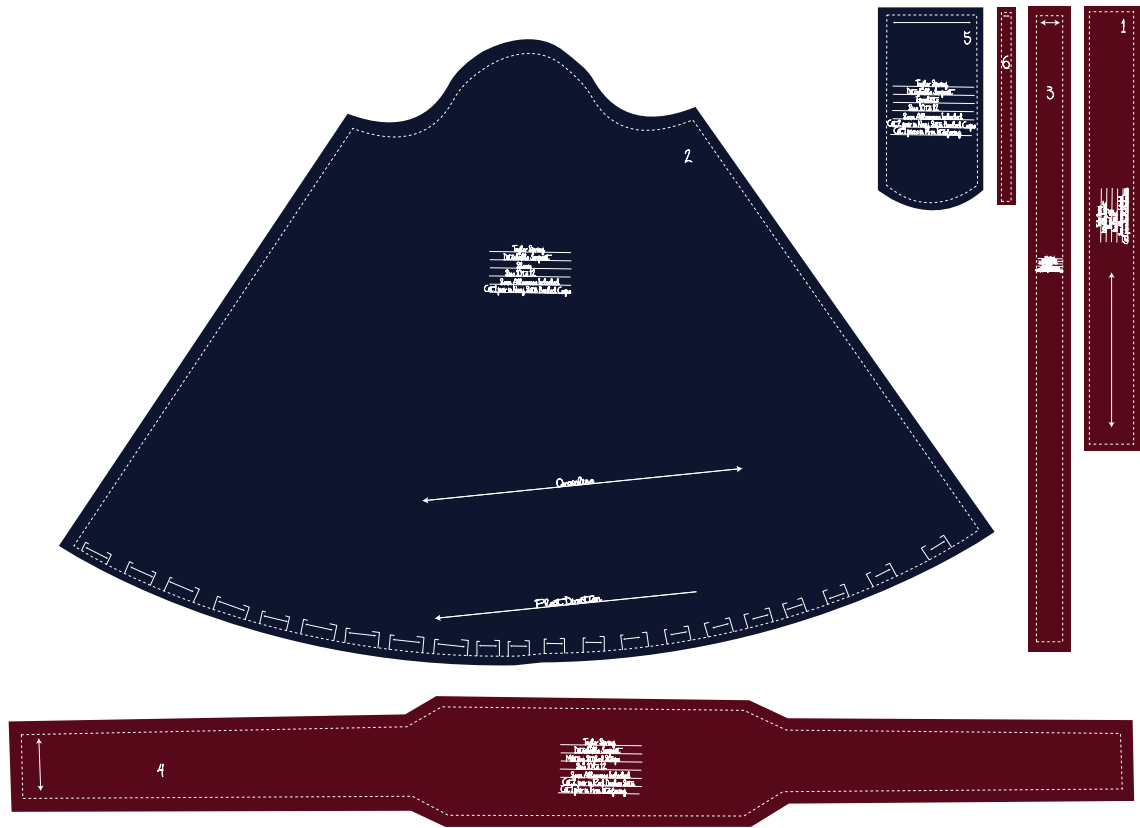
Page Name Cutting Room Specification

Issue Date 10.01.2021

Last Updated 10.05.2021



Outer Pieces - Jacket



Pieces

- 1. Sleeve Cuff
 - ↳ Cut 2 pair in Wine Red Duchess Satin
- 2. Sleeve
 - ↳ Cut 1 pairs in Navy Satin Backed Crepe
- 3. Sleeve Channel
 - ↳ Cut 1 pair in Wine Red Duchess Satin
- 4. Military-Style Straps
 - ↳ Cut 2 pairs in Wine Red Duchess Satin
 - ↳ Cut 1 pair in Firm Interfacing
- 5. Epaulettes
 - ↳ Cut 2 pairs in Navy Satin Backed Crepe
 - ↳ Cut 1 pieces in Firm Interfacing
 - ↳ Cut 1 pair in 8oz Wadding
- 6. Epaulette Boning Channels
 - ↳ Cut 4 pairs in Wine Red Duchess Satin



Designer Taylor Spring

Season S/S 2022

Garment Detachable Jumpsuit

Collection 'The Queen's Army'

Size Range S | M | L | XL

Garment Style Number TS -021 - 2022

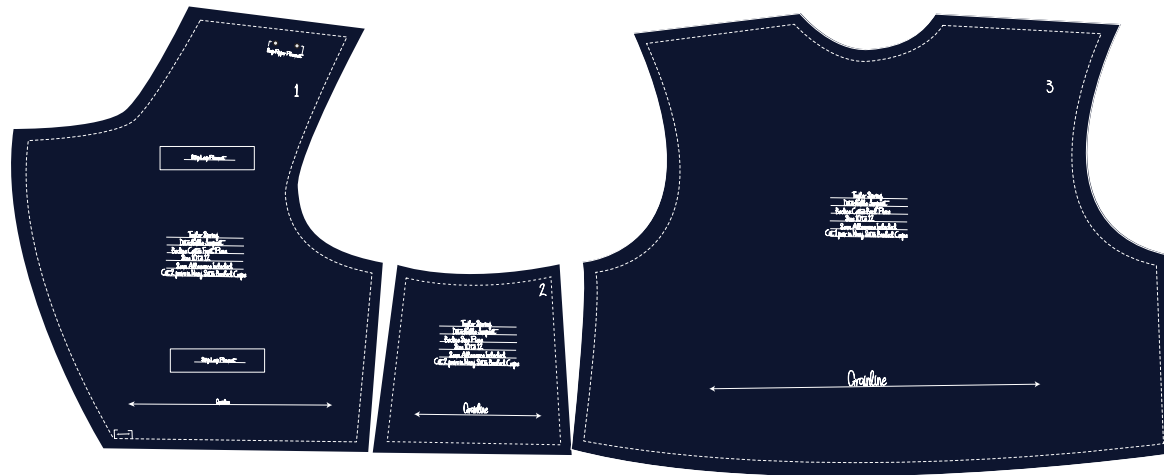
Page Name Cutting Room Specification

Issue Date 10.01.2021

Last Updated 10.05.2021



Lining



Pieces

- 1. Bodice Centre Front
↳ Cut 1 pair in Navy Satin Back Crepe
- 2. Bodice Side Piece
↳ Cut 1 pair in Navy Satin Backed Crepe
- 3. Bodice Centre Back
↳ Cut 1 pair in Navy Satin Backed Crepe



Designer Taylor Spring

Collection 'The Queen's Army'

Page Name Garment Breakdown

Season S/S 2022


Size Range S | M | L | XL

Issue Date 10.01.2021

Garment Detachable Jumpsuit

Garment Style Number TS -021 - 2022

Last Updated 10.05.2021

Operation number	Operation	Machine	Pieces used during operation	Fabric and Materials	Thread 	Seam Width	Trim Off	Stitch per CM	Needle size	Comments
1	• Cut out pieces in Navy Blue Satin	N/A	<ul style="list-style-type: none"> • CF Bodice (x2 pieces) • CB Bodice (x1 pieces) • Bodice Side Panel (x2 pieces) • Sleeve (x2 pieces) • Drop Collar (x1 piece) • Stand-Up Collar (x1 piece) • Trouser Top Section (x8 pieces) • Trouser Middle Section (x8 pieces) • Trouser Bottom Section (x8 pieces) • Trouser Pockets (x4 pieces) • Epaulettes (x4 pieces) 	• Satin Back Crepe - Navy Blue (Pantone 289 C)	N/A	N/A	N/A	N/A	N/A	• Be careful as satin frays easily and can snag the garment if pulled
2	• Cut out pieces in Wine Red Satin	N/A	<ul style="list-style-type: none"> • Sleeve Channel (x4 pieces) • Waistband Channel (x1 piece) • Trouser Top Channel (x4 pieces) • Trouser Middle Channel (x4 pieces) • Trouser Cuff (x2 pieces) • Trouser Waistband (x1 piece) • Belt Loops (x8 pieces) • Military-Styled Straps (x4 pieces) • Epaulette Boning Channels (x8 pieces) 	• Duchess Satin - Wine Red (Pantone 118 C)	N/A	N/A	N/A	N/A	N/A	N/A
3	• Cut out lining pieces	N/A	<ul style="list-style-type: none"> • CF Bodice (x2 pieces) • CB Bodice (x1 piece) • Bodice Side Panel (x2 pieces) • Drop Collar (x1 piece) • Stand-Up Collar (x1 piece) 	• Satin Back Crepe - Navy Blue (Pantone 289 C)	N/A	N/A	N/A	N/A	N/A	N/A
5	• Cut out elastic for channels (2.5cm Width)	N/A	<ul style="list-style-type: none"> • Elastic for Sleeve Channel (86cm in length when relaxed) • Elastic for Trouser Top Channel (42cm in length when relaxed) • Elastic for Trouser Middle Channel (33cm in length when relaxed) 	N/A	N/A	N/A	N/A	N/A	N/A	N/A

Designer Taylor Spring

Collection 'The Queen's Army'

Page Name Garment Breakdown

Season S/S 2022

Size Range S | M | L | XL

Issue Date 10.01.2021

Garment Detachable Jumpsuit

Garment Style Number TS -021 - 2022

Last Updated 10.05.2021

Operation number	Operation	Machine	Pieces used during operation	Fabric and Materials	Thread 	Seam Width	Trim Off	Stitch per CM	Needle size	Comments
6	<ul style="list-style-type: none"> Cut out elastic for channels (5cm Width) 	N/A	<ul style="list-style-type: none"> Elastic for Trouser Waistband (58cm in length when relaxed) Elastic for Bodice Waistband (70cm in length when relaxed) Elastic for Trouser Cuffs (27cm when relaxed) Elastic for Sleeve Cuffs (20cm length when relaxed) 	N/A	N/A	N/A	N/A	N/A	N/A	N/A
7	<ul style="list-style-type: none"> Cut out pieces in heavy interfacing 	N/A	<ul style="list-style-type: none"> Drop Collar (x1 piece) Stand-Up Collar (x1 piece) Belt Loops (x4 pieces) 	<ul style="list-style-type: none"> Firm non-woven (White/Charcoal) 	N/A	N/A	N/A	N/A	N/A	N/A
8	<ul style="list-style-type: none"> Interface Pieces 	N/A	<ul style="list-style-type: none"> Drop Collar (x1 piece) Stand-Up Collar (x1 piece) Belt Loops (x4 pieces) Military-Styled Straps (x4 pieces) Bodice Lapels 	<ul style="list-style-type: none"> Firm non-woven (White/Charcoal) Satin Back Crepe - Navy Blue (Pantone 289 C) Duchess Satin - Wine Red (Pantone 118 C) 	N/A	N/A	N/A	N/A	N/A	N/A
9	<ul style="list-style-type: none"> Sew pleats on pieces 	<ul style="list-style-type: none"> L/S 301 	<ul style="list-style-type: none"> Sleeve (x2 pieces) Trouser Top Section (x8 pieces) Trouser Middle Section (x8 pieces) Trouser Bottom Section (x8 pieces) 	<ul style="list-style-type: none"> Satin Back Crepe - Navy Blue (Pantone 289 C) 	<ul style="list-style-type: none"> 120 Thread - Navy Blue (Pantone 289 C) 	<ul style="list-style-type: none"> 0.5cm 	<ul style="list-style-type: none"> No 	<ul style="list-style-type: none"> 14 	<ul style="list-style-type: none"> 70 	<ul style="list-style-type: none"> Pleats are marked on all the pattern pieces required with an arrow in which direction to sew the pleats in. Pleats are essential to make sure all the pieces fit into the channels

Designer Taylor Spring

Collection 'The Queen's Army'

Page Name Garment Breakdown

Season S/S 2022


Size Range S | M | L | XL

Issue Date 10.01.2021

Garment Detachable Jumpsuit

Garment Style Number TS -021 - 2022

Last Updated 10.05.2021

Operation number	Operation	Machine	Pieces used during operation	Fabric and Materials	Thread 	Seam Width	Trim Off	Stitch per CM	Needle size	Comments
10	Overlock Navy Blue pieces	• O/L e8117	<ul style="list-style-type: none"> • CF Bodice (x2 pieces) • CB Bodice (x1 pieces) • Bodice Side Panel (x2 pieces) • CF Bodice Lining (x2 pieces) • CB Bodice Lining (x1 pieces) • Bodice Side Panel Lining (x2 pieces) • Bodice Waistband Channel (x1 piece) • Sleeve (x2 pieces) • Drop Collar (x1 piece) • Trouser Top Section (x8 pieces) • Trouser Middle Section (x8 pieces) • Trouser Bottom Section (x8 pieces) • Trouser Waistband Channel (x1 piece) • Trouser Waistband (x1 piece) • Belt Loops (x8 pieces) • Epaulettes (x4 pieces) 	• Satin Back Crepe - Navy Blue (Pantone 289 C)	• 120 Thread - Navy Blue (Pantone 289 C)	• 1cm	• No	• 15	• 80	• Make sure pieces are overlocked nicely and carefully to allow for a professional and aesthetically pleasing finish.
11	Overlock Wine Red pieces	• O/L e8117	<ul style="list-style-type: none"> • Sleeve Cuffs (x 2 pieces) • Military-Styled Straps (x4 pieces) • Trouser Cuff (x2 pieces) • Sleeve Channel (x4 pieces) • Trouser Top Channel (x4 pieces) • Trouser Middle Channel (x4 pieces) • Stand-Up Collar (x1 piece) • Sleeve Channel (x4 pieces) 	• Duchess Satin - Wine Red (Pantone 118 C)	• 120 Thread - Wine Red (Pantone 118 C)	• 1cm	• No	• 15	• 15	• Make sure pieces are overlocked nicely and carefully to allow for a professional and aesthetically pleasing finish.
12	Sew belt loops together, then bag out and press	• L/S 301	<ul style="list-style-type: none"> • Belt Loops (x4 pieces) 	• Satin Back Crepe - Navy Blue (Pantone 289 C)	• 120 Thread - Navy Blue (Pantone 289 C)	• 1cm	• 0.8cm	• 14	• 70	• Top stitch two belt loop pieces right side to right side leaving the width edges open. Trim off seam allowance then bag out
13	Sew Bodice side panels to CF panels	• L/S 301	<ul style="list-style-type: none"> • Bodice Side Panels (x2 pieces) • Centre Front Bodice (x2 pieces) 	• Satin Back Crepe - Navy Blue (Pantone 289 C)	• 120 Thread - Navy Blue (Pantone 289 C)	• 1cm	No	• 14	• 70	• Place panels right side to right side then sew

Designer Taylor Spring

Collection 'The Queen's Army'

Page Name Garment Breakdown

Season S/S 2022


Size Range S | M | L | XL

Issue Date 10.01.2021

Garment Detachable Jumpsuit

Garment Style Number TS -021 - 2022

Last Updated 10.05.2021

Operation number	Operation	Machine	Pieces used during operation	Fabric and Materials	Thread 	Seam Width	Trim Off	Stitch per CM	Needle size	Comments
14	Sew Bodice side panels to CB panels	• L/S 301	<ul style="list-style-type: none"> • Bodice Side Panels (x2 pieces) • Centre Back Bodice (x1 piece) 	• Satin Back Crepe - Navy Blue (Pantone 289 C)	• 120 Thread - Navy Blue (Pantone 289 C)	• 1cm	No	• 14	• 70	• Place panels right side to rights side then sew
15	Sew CF shoulder seam to CB shoulder seam	• L/S 301	<ul style="list-style-type: none"> • Centre Front Bodice (x2 pieces) • Centre Back Bodice (x1 piece) 	• Satin Back Crepe - Navy Blue (Pantone 289 C)	• 120 Thread - Navy Blue (Pantone 289 C)	• 1cm	No	• 14	• 70	• Place panels right side to rights side then sew
16	Repeat above 3 steps for lining	• L/S 301	<ul style="list-style-type: none"> • Centre Front Bodice (x2 pieces) • Centre Back Bodice (x1 piece) • Bodice Side Panels (x2 pieces) 	• Satin Back Crepe - Navy Blue (Pantone 289 C)	• 120 Thread - Navy Blue (Pantone 289 C)	• 1cm	No	• 14	• 70	• Refer to pieces for placement of belt loops
17	Top stitch belt loops onto CF	• L/S 301	<ul style="list-style-type: none"> • Centre Front Bodice (x2 pieces) • Belt Loops (x4 pieces) 	• Satin Back Crepe - Navy Blue (Pantone 289 C)	• 120 Thread - Navy Blue (Pantone 289 C)	• 1cm	N/A	• 14	• 70	• Make sure stitching and placement is accurate - use pattern piece to see placement of loops
18	Sew bodice straps together, then bag out. Fold in edges by 1cm and top stitch	• L/S 301	• Military-Styled Straps (x4 pieces)	• Duchess Satin - Wine Red (Pantone 118 C)	• 120 Thread - Navy Blue (Pantone 289 C)	• 1cm	Yes	• 14	• 70	• Trim off corners
19	Place drop collar pieces right side to right side and stitch together	• L/S 301	• Drop Collar (x2 pieces)		• 120 Thread - Navy Blue (Pantone 289 C)	• 1cm	Yes	• 14	• 70	• Leave the neckline seam open to bag out from and stitch to neckline
20	Place stand-up collar pieces right side to right side and stitch together	• L/S 301	• Stand-up Collar (x2 pieces)	• Duchess Satin - Wine Red (Pantone 118 C)	• 120 Thread - Wine Red (Pantone 118 C)	• 1cm	Yes	• 14	• 70	• Leave the neckline seam open to bag out from and stitch to neckline
21	Trim off Seam Allowance and snip corners off of both collars and then bag out, pushing out the corners to make sure the end points are prominent	N/A	<ul style="list-style-type: none"> • Drop Collar (x1 piece) • Stand-Up Collar (x1 piece) 	• Duchess Satin - Wine Red (Pantone 118 C)	N/A	• 1cm	Yes	N/A	N/A	• Roll the seam to make sure they don't pull
22	Top stitch both collars	• L/S 301	<ul style="list-style-type: none"> • Drop Collar (x1 piece) • Stand-Up Collar (x1 piece) • 		• 120 Thread - Navy Blue (Pantone 289 C)	• 1cm		• 14	• 70	• Accuracy is KEY!!
23	Secure drop collar in place on neckline and top stitch	• L/S 301	• Drop Collar (x1 piece)	• Satin Back Crepe - Navy Blue (Pantone 289 C)	• 120 Thread - Navy Blue (Pantone 289 C)	• 1cm		• 14	• 70	• Check notches for placement

Designer Taylor Spring

Collection 'The Queen's Army'

Page Name Garment Breakdown

Season S/S 2022


Size Range S | M | L | XL

Issue Date 10.01.2021

Garment Detachable Jumpsuit

Garment Style Number TS -021 - 2022

Last Updated 10.05.2021

Operation number	Operation	Machine	Pieces used during operation	Fabric and Materials	Thread 	Seam Width	Trim Off	Stitch per CM	Needle size	Comments
24	Secure stand-up collar in place on neckline and top stitch	• L/S 301	• Stand-up Collar (x1 piece)	• Duchess Satin - Wine Red (Pantone 118 C)	• 120 Thread - Wine Red (Pantone 118 C)			• 14	• 70	• Check notches for placement
25	Sew lining to bodice	• L/S 301	• Bodice • Lining	• Satin Back Crepe - Navy Blue (Pantone 289 C)	• 120 Thread - Navy Blue (Pantone 289 C)			• 14	• 70	• Place lining right side to right side onto of bodice and sew up from CF, around neckline and back down to the end of the CF
26	Press bodice and then press lapel back by 2cm at edge		• CF Bodice (x2 pieces) • CB Bodice (x1 pieces) • Bodice Side Panel (x2 pieces) • CF Bodice Lining (x2 pieces) • CB Bodice Lining (x1 pieces) • Bodice Side Panel Lining (x2 pieces) • Shoulder Pads	• Satin Back Crepe - Navy Blue (Pantone 289 C)						• Check pattern for fold line
27	Fold waistband in half and press. Then fold the top edges in by 1cm and press	N/A	• Bodice Waistband Channel (x1 piece)	• Satin Back Crepe - Navy Blue (Pantone 289 C)		N/A	N/A	N/A	N/A	N/A
28	Sew edge of elastic into fold of waistband and secure with a row of stitching, then pull elastic and secure it at 23cm before the other edge of waistband and top stitch this edge to hold in place	• L/S 301	• Waistband Channel Elastic (5cm width, 70cm length when relaxed)	• Satin Back Crepe - Navy Blue (Pantone 289 C)	• 120 Thread - Navy Blue (Pantone 289 C)			• 14	• 70	• Secure at the points properly to avoid the elastic being released when top stitching
29	Pull elastic and waistband until it is flat (not elasticated at all) and sew a row of stitching along the waistband 1cm from folded edge - sew from the edge where the elastic is secured to the other edge (23cm away from the end of the waistband)	• L/S 301	• Bodice Waistband Channel	• Satin Back Crepe - Navy Blue (Pantone 289 C)	• 120 Thread - Navy Blue (Pantone 289 C)			• 14	• 70	• Make sure that the tension is released only AFTER the elastic has been sewn to the waistband as this will alter the pull of the elastic
30	Top stitch folded edges together, catching lining and 2cm fold of lapel	• L/S 301	• Bodice Waistband Channel	• Satin Back Crepe - Navy Blue (Pantone 289 C)	• 120 Thread - Navy Blue (Pantone 289 C)					N/A
31	Sew sleeve channel pieces together	• L/S 301	• Sleeve Channel (x4 pieces)	• Duchess Satin - Wine Red (Pantone 118 C)	• 120 Thread - Wine Red (Pantone 118 C)			• 14	• 70	• Place two pieces right side to right side and top stitch, leaving edges open to bag out

Designer Taylor Spring

Collection 'The Queen's Army'

Page Name Garment Breakdown

Season S/S 2022


Size Range S | M | L | XL

Issue Date 10.01.2021

Garment Detachable Jumpsuit

Garment Style Number TS -021 - 2022

Last Updated 10.05.2021

Operation number	Operation	Machine	Pieces used during operation	Fabric and Materials	Thread 	Seam Width	Trim Off	Stitch per CM	Needle size	Comments
33	Turn sleeve channel seams (length) in by 1cm, press and then top stitch onto sleeve make sure edges are hidden under fold	• L/S 301	• Sleeve (x2 pieces) • Sleeve Channel (x2 pieces)	• Duchess Satin - Wine Red (Pantone 118 C)	• 120 Thread - Wine Red (Pantone 118 C)	• 1cm		• 14	• 70	• Edge stitch for a neat and clean finish.
34	Insert elastic into the sleeve channel, top stitch to secure in place at top end of channel, pull elastic through to the bottom of the channel and secure at bottom edge of channel by top-stitching	• L/S 301	• Sleeve (x2 pieces) • Sleeve Channel (x 2 pieces) • Sleeve Channel Elastic (x2 pieces - 2.5 cm width, 86cm in length when relaxed)	• Duchess Satin - Wine Red (Pantone 118 C)	• 120 Thread - Wine Red (Pantone 118 C)	• 1cm		• 14	• 70	• Make sure the elastic does not twist!
35	Fold sleeve cuffs in half and press		• Sleeve Cuffs (x2 pieces)	• Duchess Satin - Wine Red (Pantone 118 C)						• Make sure they are folded accurately to avoid them distorting
36	Place elastic into sleeve cuffs and secure at both end - stitch elastic in end folds of cuffs leaving the rest loose	• L/S 301	• Sleeve Cuffs (x2 pieces) • Sleeve Cuff Elastic (x2 pieces - 5cm width, 20cm in length when relaxed)	• Duchess Satin - Wine Red (Pantone 118 C)	• 120 Thread - Wine Red (Pantone 118 C)	• 1cm		• 14	• 70	N/A
37	Pull cuffs until the elastic is as stretched out as the channel and then sew two stitch lines, the first one is 2cm from the seam allowance and the second one is 1cm from the fold. Then sew the two edges together, right side to right side	• L/S 301	• Sleeve Cuffs (x2 pieces) • Sleeve Cuff Elastic (x2 pieces - 5cm width, 20cm in length when relaxed)		• 120 Thread - Wine Red (Pantone 118 C)	• 1cm		• 14	• 70	• Accuracy is KEY!!
38	Repeat the above 3 steps for trouser cuffs	• L/S 301	• Trouser Cuffs (x2 pieces) • Trouser Cuff Elastic (x2 pieces, 5cm in width, 27cm in length when relaxed)		• 120 Thread - Wine Red (Pantone 118 C)	• 1cm		• 14	• 70	N/A
39	Sew sleeve side seam together	• L/S 301	• Sleeve (x2 pieces)		• 120 Thread - Navy Blue (Pantone 289 C)			• 14	• 70	• Place pieces right side to right side and sew up to the sleeve head
40	Fold shoulder pads in half, mark out half way line and then match up to shoulder seams. Sandwich shoulder pads between lining and bodice and secure with a row of stitching down shoulder seam	• L/S 301	• CF Bodice (x2 pieces) • CB Bodice (x1 pieces) • Bodice Side Panel (x2 pieces) • CF Bodice Lining (x2 pieces) • CB Bodice Lining (x1 pieces) • Bodice Side Panel Lining (x2 pieces) • Shoulder Pads	• Satin Back Crepe - Navy Blue (Pantone 289 C)	• 120 Thread - Navy Blue (Pantone 289 C)			• 14	• 70	• More security will be given when sleeve is sewn into armhole

Designer Taylor Spring

Collection 'The Queen's Army'

Page Name Garment Breakdown

Season S/S 2022


Size Range S | M | L | XL

Issue Date 10.01.2021

Garment Satin Drapped Jumpsuit

Garment Style Number TS -021 - 2022

Last Updated 10.05.2021

Operation number	Operation	Machine	Pieces used during operation	Fabric and Materials	Thread 	Seam Width	Trim Off	Stitch per CM	Needle size	Comments
41	Sew sleeve into armhole	• L/S 301	<ul style="list-style-type: none"> • CF Bodice (x2 pieces) • CB Bodice (x1 pieces) • Bodice Side Panel (x2 pieces) • CF Bodice Lining (x2 pieces) • CB Bodice Lining (x1 pieces) • Bodice Side Panel Lining (x2 pieces) • Sleeve (x2 pieces) 	• Satin Back Crepe - Navy Blue (Pantone 289 C)	• 120 Thread - Navy Blue (Pantone 289 C)			• 14	• 70	• Make sure to catch 1cm of shoulder pads
42	• Secure in all bodice poppers	N/A	<ul style="list-style-type: none"> • CF Bodice (x2 pieces) • CB Bodice (x1 pieces) • Bodice Side Panel (x2 pieces) • CF Bodice Lining (x2 pieces) • CB Bodice Lining (x1 pieces) • Bodice Side Panel Lining (x2 pieces) • Bodice Waistband Channel (x1 piece) • Military-Styled Straps (x2 pieces) 	1.25cm width Poppers in Gold	N/A	N/A	N/A	N/A	N/A	• See where they are marked on pattern pieces
43	• Place Trouser Top Channel pieces (largest trouser channel) on top of each other (right sides facing out) and stitch the elastic in at both width's end	• L/S 301	<ul style="list-style-type: none"> • Trouser Top Channel (x4 pieces) • Trouser Top Channel Elastic (2.5cm width, 90cm length when relaxed) 	• Duchess Satin - Wine Red (Pantone 118 C)	• 120 Thread - Wine Red (Pantone 118 C)	• 1cm		• 14	• 70	• Make sure the elastic is secured
44	• Pull channel until the elastic is as stretched out as the channel and then sew two stitch lines, the first one is 2cm from the upper seam allowance and the second one is 2cm from the lower seam allowance	• L/S 301	<ul style="list-style-type: none"> • Trouser Top Channel (x2 pieces) • Trouser Top Channel Elastic x1 piece (2.5cm width, 90cm length when relaxed) 	• Duchess Satin - Wine Red (Pantone 118 C)	• 120 Thread - Wine Red (Pantone 118 C)	• 1cm		• 14	• 70	• Make sure elastic is stretched to the fullest even if it feels like it is resisting
45	• Repeat the above 2 steps for the other Trouser Top Channel, as well as both Trouser Middle Channels	• L/S 301	<ul style="list-style-type: none"> • Trouser Top Channel (x2 pieces) • Trouser Top Channel Elastic (x1 piece - 2.5cm width, 42cm length when relaxed) • Trouser Middle Channel (x2 pieces) • Trouser Middle Channel Elastic (x1 piece - 2.5cm width, 33cm length when relaxed) 	• Duchess Satin - Wine Red (Pantone 118 C)	• 120 Thread - Wine Red (Pantone 118 C)	• 1cm		• 14	• 70	N/A

Designer Taylor Spring

Collection 'The Queen's Army'

Page Name Garment Breakdown

Season S/S 2022


Size Range S | M | L | XL

Issue Date 10.01.2021

Garment Satin Drapped Jumpsuit

Garment Style Number TS -021 - 2022

Last Updated 10.05.2021

Operation number	Operation	Machine	Pieces used during operation	Fabric and Materials	Thread 	Seam Width	Trim Off	Stitch per CM	Needle size	Comments
46	For the first section of the trousers, sew the two CF panels together, right side to right side	• L/S 301	• Trousers Top Channel - CF Pieces (x2 pieces)	• Satin Back Crepe - Navy Blue (Pantone 289 C)	• 120 Thread - Navy Blue (Pantone 289 C)	• 1cm		• 14	• 70	• See Cutting Room Spec for order of construction
47	Sew the CB panels together, right side to right side	• L/S 301	• Trousers Top Channel - CB Pieces (x2 pieces)	• Satin Back Crepe - Navy Blue (Pantone 289 C)	• 120 Thread - Navy Blue (Pantone 289 C)	• 1cm		• 14	• 70	• See Cutting Room Spec for order of construction
48	Turn pocket openings over by 1cm and press outwards. Secure Pockets in place on CF side seam (right side to right side) and then place CB on top (again.. right side to right side!) and sew down the seam, making sure that you sew around the pocket not over it as this would close it off	• L/S 301	• Trousers Pockets (x2 pieces) • Trousers Top Section - CF Pieces (x2 pieces) • Trousers Top Section - CB Pieces (x2 pieces)	• Satin Back Crepe - Navy Blue (Pantone 289 C)	• 120 Thread - Navy Blue (Pantone 289 C)	• 1cm	• No	• 14	• 70	• Have the top of the pocket on the trouser seam allowance as the pocket will be sewn outside of the trousers to then be bagged inwards
49	Sew other end of trouser section, this again entails the CF and CB being right side to right side and sewing them together. After this you will have a big trouser section that looks like a baggy channel	• L/S 301	• Trousers Top Section - CF Pieces (x2 pieces) • Trousers Top Section - CB Pieces (x2 pieces)	• Satin Back Crepe - Navy Blue (Pantone 289 C)	• 120 Thread - Navy Blue (Pantone 289 C)	• 1cm	• No	• 14	• 70	• Make them loop up and down.
50	Secure the Navy Ribbon Trimming in place on the top of the Top Trouser Section and Middle Section and secure with a row of top stitching -	• L/S 301	• Trousers Top Section - CF Pieces (x2 pieces) • Trousers Top Section - CB Pieces (x2 pieces) • Trousers Middle Section - CF Pieces (x2 pieces) • Trousers Middle Section - CB Pieces (x2 pieces) •	• Satin Back Crepe - Navy Blue (Pantone 289 C)	• 120 Thread - Navy Blue (Pantone 289 C)	N/A	N/A	• 14	• 70	• Drop the loops down by 1.5cm and make sure ribbon is secure in the seam as it is going to take the weight of all the chains. Make sure that the Ribbon loops out in order to be able to thread the chains through as a final finish

Designer Taylor Spring

Collection 'The Queen's Army'

Page Name Garment Breakdown

Season S/S 2022


Size Range S | M | L | XL

Issue Date 10.01.2021

Garment Satin Drapped Jumpsuit

Garment Style Number TS -021 - 2022

Last Updated 10.05.2021

Operation number	Operation	Machine	Pieces used during operation	Fabric and Materials	Thread 	Seam Width	Trim Off	Stitch per CM	Needle size	Comments
51	Place this completed trouser section right side to right side with the completed Top Trouser Channel, pulling the channel as tight as it will pull (it helps to secure in place to hold it together). Then stitch the the channel onto the trouser section making sure that you are going slowly and accurately a this can affect the overall drape of the trouser. Once done, flip the Trouser Top Section	<ul style="list-style-type: none"> L/S 301 	<ul style="list-style-type: none"> Trouser Top Section - CF Pieces (x2 pieces) Trouser Top Section - CB Pieces (x2 pieces) Trouser Top Channel (x1 piece) 	<ul style="list-style-type: none"> Satin Back Crepe - Navy Blue (Pantone 289 C) 	<ul style="list-style-type: none"> 120 Thread - Navy Blue (Pantone 289 C) 	<ul style="list-style-type: none"> 1cm 	<ul style="list-style-type: none"> No 	<ul style="list-style-type: none"> 14 	<ul style="list-style-type: none"> 70 	<ul style="list-style-type: none"> Pull the channel as tight as it will pull to make sure that the circumference of the Trouser Top Channel matches that of the Trouser Top Section
52	Repeat this above 5 stages for the other Trouser Top Section as well as both the Trouser Middle Sections and Trouser Bottom Sections for each leg	<ul style="list-style-type: none"> L/S 301 	<ul style="list-style-type: none"> Trouser Top Section - CF Pieces (x2 pieces) Trouser Top Section - CB Pieces (x2 pieces) Trouser Top Channel (x1 piece) Trouser Middle Section - CF Pieces (x4 pieces) Trouser Top Section - CB Pieces (x4 pieces) Trouser Middle Channel (x2 piece) Trouser Bottom Section - CF Pieces (x4 pieces) Trouser Top Section - CB Pieces (x4 pieces) Trouser Bottom Channel (x2 piece) 	<ul style="list-style-type: none"> Satin Back Crepe - Navy Blue (Pantone 289 C) 	<ul style="list-style-type: none"> 120 Thread - Navy Blue (Pantone 289 C) 	<ul style="list-style-type: none"> 1cm 	<ul style="list-style-type: none"> No 	<ul style="list-style-type: none"> 14 	<ul style="list-style-type: none"> 70 	<ul style="list-style-type: none"> Accuracy is KEY!!
53	For Trouser Cuff construction, refer back to step 39.	N/A	N/A	N/A	N/A	N/A	N/A	N/A	N/A	N/A
54	For the Trouser Waistband, fold piece in half and press, then secure elastic in both ends of waistband, leaving the rest free	<ul style="list-style-type: none"> L/S 301 	<ul style="list-style-type: none"> Trouser Waistband (1 Piece) Trouser Waistband Elastic (5cm in width, 58cm in length) 	<ul style="list-style-type: none"> Satin Back Crepe - Navy Blue (Pantone 289 C) 	<ul style="list-style-type: none"> 120 Thread - Navy Blue (Pantone 289 C) 	<ul style="list-style-type: none"> 1cm 	<ul style="list-style-type: none"> No 	<ul style="list-style-type: none"> 14 	<ul style="list-style-type: none"> 70 	<ul style="list-style-type: none"> Press accurately to avoid twisting

Designer Taylor Spring

Collection 'The Queen's Army'

Page Name Garment Breakdown

Season S/S 2022


Size Range S | M | L | XL

Issue Date 10.01.2021

Garment Satin Drapped Jumpsuit

Garment Style Number TS -021 - 2022

Last Updated 10.05.2021

Operation number	Operation	Machine	Pieces used during operation	Fabric and Materials	Thread 	Seam Width	Trim Off	Stitch per CM	Needle size	Comments
55	Pull elastic and waistband until the are both at equal length, then sew a row of stitching 1cm from fold, pulling the elastic and waistband through the machine as you go along. Then sew another row of stitching 2cm from the raw edge of waistband. Then sew the two edges together, right side to right side.	• L/S 301	• Trousers Waistband (1 Piece) • Trousers Waistband Elastic (5cm in width, 58cm in length)	• Satin Back Crepe - Navy Blue (Pantone 289 C)	• 120 Thread - Navy Blue (Pantone 289 C)	• 1cm	• No	• 14	• 70	• Make sure the elastic is stretched from edge to edge otherwise it wont be as elasticated when the waistband is constructed
56	Place the waistband and the top section of the trousers right side to right side, pull them to equal lengths and sew together	• L/S 301	• Trousers Waistband • Trousers Top Section - CF Pieces (x2 pieces) • Trousers Top Section - CB Pieces (x2 pieces)	• Satin Back Crepe - Navy Blue (Pantone 289 C)	• 120 Thread - Navy Blue (Pantone 289 C)	• 1cm	• No	• 14	• 70	N/A
57	Mark out popper placement on trouser waistband and then insert poppers	N/A	• Trousers Waistband	• Gold Poppers (2.5cm)	N/A	N/A	N/A	N/A	N/A	N/A
58	For Epaulettes boning channels, sew right side to right side then bag out and top stitch onto epaulette piece	• L/S 301	• Epaulette pieces (x4 pieces) • Epaulette Boning Channels (x8 pieces)	• Duchess Satin - Wine Red (Pantone 118 C) • Satin Back Crepe - Navy Blue (Pantone 289 C) • 8oz Wadding	• 120 Thread - Wine Red (Pantone 118 C)	• 1cm	• Yes	• 14	• 70	• Using a pencil may help to bag out as they are very small channels!
59	Sew epaulettes pieces right side to right side with Wadding underneath.	• L/S 301	• Epaulette pieces (x4 pieces) • Epaulette Boning Channels (x8 pieces)	• Satin Back Crepe - Navy Blue (Pantone 289 C) • 8oz Wadding	• 120 Thread - Navy Blue (Pantone 289 C)	• 1cm	• Yes	• 14	• 70	N/A
60	Bag out epaulettes, insert boning, press opening in by 1cm and hand stitch shut.	• L/S 301	• Epaulette pieces (x4 pieces) • Epaulette Boning Channels (x8 pieces)	• Satin Back Crepe - Navy Blue (Pantone 289 C) • 8oz Wadding	• 120 Thread - Navy Blue (Pantone 289 C)	N/A	N/A	N/A	N/A	N/A
61	To finalise garment, hand sew on chains and then top stitch on navy twist cord to finish off. Then thread the gold chains through the ribbon loops on trousers	N/A	• Epaulette pieces (x4 pieces) • Epaulette Boning Channels (x8 pieces)	N/A	• 120 Thread - Navy Blue (Pantone 289 C)	N/A	N/A	N/A	N/A	• Accuracy is key here, follow design

Designer Taylor Spring

Season S/S 2022

Garment Detachable Jumpsuit

Collection 'The Queen's Army'

Size Range S | M | L | XL

Garment Style Number TS -021 - 2022

Page Name Lay Plan

Issue Date 10.01.2021

Last Updated 10.05.2021



© BERBENTECHNOLOGY

Navy Satin Backed Crepe Lay Plan

The totally amount of fabric used for pieces consisting of Navy Satin Backed Crepe is 8 Metres. Within this lay plan, there is a utilization of 76%. This suggests that there is a small amount of fabric wastage from the 8 metres - a percentage as small as 24%. This can be used as additional scrap fabric or it can be up-cycled to create accessories.



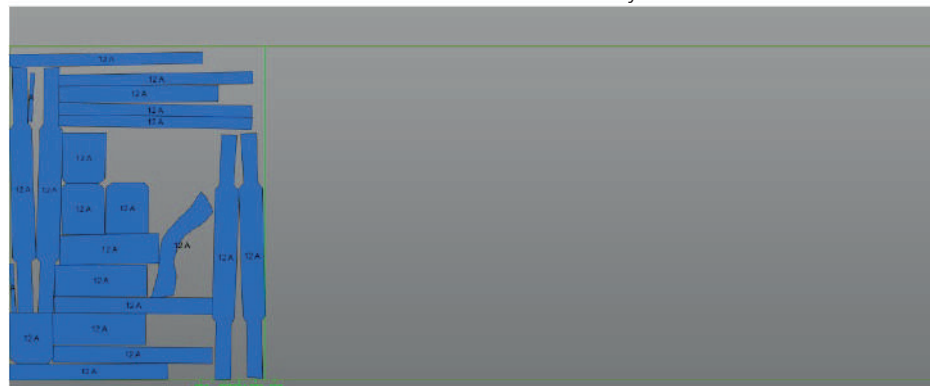
Marker name: BLUE LAYPLAN-112
Utilization: 75.72%

Length: 7m 96.70cm
Model/Size/Qty: BLUE LAYPLAN 12/1

Width: 111.99cm
Unplaced/Placed: 0/52

Wine Red Duchess Satin Lay Plan

The totally amount of fabric used for pieces consisting of Wine Red Duchess Satin is 1.2 Metres. Within this lay plan, there is a utilization of 67%. This suggests that there is a 33% fabric wastage from this fabric. This wastage can be used as spare material or may be used to create accessories.



Marker name: RED LAYPLAN-150
Utilization: 67.39%

Length: 1m 16.99cm
Model/Size/Qty: RED LAYPLAN 12/1

Width: 150.01cm
Unplaced/Placed: 0/22

Designer Taylor Spring

Season S/S 2022

Garment Detachable Jumpsuit

Collection 'The Queen's Army'

Size Range S | M | L | XL

Garment Style Number TS -021 - 2022

Page Name Cloth Analysis

Issue Date 10.01.2021

Last Updated 10.05.2021

Polyester Satin



Satin Fibre Content
100% Polyester
The structure of this fabric is Satin Weave
The Satin Weave can be seen to give a lustrous appearance

Polyester Wadding 8oz



100% Polyester
Man-Made Fibre

Care Label

Do Not Tumble Dry

Do Not Bleach

Professional Dry Cleaning Only

Wash at 30 Degrees

Brand Label



190gsm satin smooth artisan garment labels



Abrasion	CF Perspiration	Col change	Staining diacetate	cotton	polyamide	polyester	acrylic	wool	Drape Coefficient
See damage at 5k rubs and 10k rubs	acid	5	5	5	5	5	5	5	48.10%
	alkaline	5	5	5	5	5	5	5	
Abrasion	CF Perspiration	Col change	Staining diacetate	cotton	polyamide	polyester	acrylic	wool	
See damage at 5k rubs and 10k rubs	acid	5	4	5	3	5	5	5	
	alkaline	5	3	5	3	5	5	5	
									Note: fabric not conditioned. DH 29/04/21
Blue satin backed crepe	Strength	Warp	Breaking strength (kgf)	Elongation (mm)	Weft	Breaking strength (kgf)	Elongation (mm)		
			102	60.3		88.7	75.7		
			99.9	57.8		85.6	72.1		
			96.8	54.7		87.7	77.8		
		Average	99.6	57.6	Average	87.3	75.2		
Red duchess satin	Strength	Warp	Breaking strength (kgf)	Elongation (mm)	Weft	Breaking strength (kgf)	Elongation (mm)		
			199.8	60.1		111.1	72.7		
			195.7	58.3		143.7	75.2		
			187.6	52.8		139.7	55.1		
		Average	194.4	57.1	Average	131.5	67.7		

Cusick Drape Test

The majority of this garment consists of oversized, draped panels - therefore, conducting a test into how well this fabric drapes is crucial to the performance of the garment. The fabric that underwent a drape test was the Navy Satin Backed Crepe, as the Wine Red Duchess Satin was not used on large draping panels.

It can be seen below from the results of the drape test, that the fabric has a good drape as the drape coefficient of 48% is in closer proximity to 0% than it is to 100%. From this it can be understood that this fabric works well with the nature and performance of the garment, as it has been proven to be a pliable and more drapeable material.

Tensile Breaking Strength and Elongation

Breaking Strength

Tensile Strength has been conducted on both Wine Red Duchess Satin and Navy Satin Backed Crepe to see how durable the fabric is as it will be subjected to the resistance of elastic within the waistbands.

The results from the Tensile Strength Test for the Duchess Satin resulted in an outcome of 1,903 Newtons, and the Satin Backed Crepe had an outcome of 977 Newtons. British Standard 2543 (2004) state that a minimum breaking strength of 350N warp and weft is required. The outcome of both the Duchess Satin and the Satin Backed Crepe drastically exceed the minimum requirements for tensile strength (more so the Duchess Satin), and are propitious for the desired use and strength resilience they will endure.

Elongation

Elongation has been conducted on both Wine Red Duchess Satin and Navy Satin Backed Crepe to see how much stretch the fabric has due to it being subjected to the resistance of elastic within the channels.

The results from the elongation for the Duchess Satin resulted in an outcome of 33%, and the Satin Back Crepe had an outcome of 38%. From this it can be understood that along the weft grain of the fabric there is a decent amount of stretch, but not too much that there is no structure within the stretch. This is perfect for the elastic channels as the intention is to have a bit of stretch/ give around the channels to allow for the elastic to manipulate the fabric but for the fabric to also be able to stretch and elongate with the elastic.

Abrasion Test

As this garment consists of chains rubbing against the garment and elastic that is trapped within the channels and waistbands, an abrasion test can help determine the wear and tear ability of this product.

This test was conducted on both the Wine Red Duchess Satin and Navy Satin Backed Crepe. Both the 5k and the 10k rubs shows limited to no signs of abrasion, apart from a small amount of piling on the fabric surface. This suggests that these two fabrics are durable and therefore suitable for the wear and tear of this garment.

5k Rubs



10k Rubs



Perspiration Test

As the Satin Backed Crepe is used for the lining, a perspiration test took place to see how well the fabric holds its colour when being worn. The results for the perspiration test signify that the fabric has a high colour fastness and can withstand the wear and tear of a day-to-day user as the results were all a 5 for the satin backed crepe. However, there were some lower scores on the Duchess Satin which signifies that there are some staining issues, however this is not used on main garment pieces.

Designer Tayler Spring

Season S/S 2022

Garment Detachable Jumpsuit

Collection 'The Queen's Army'

Size Range S | M | L | XL

Garment Style Number TS -021 - 2022

Page Name Comparative Product Analysis

Issue Date 10.01.2021

Last Updated 10.05.2021

Zadig and Voltaire



RRP
£435.00

Size Options
XS, S, M

Material Quality
100% Polyester Satin

Market
High End

Aftercare
Hand Wash Only

Bronx and Banco



RRP
£523.00

Size Options
XS, S, M, L

Material Quality
60% Polyester
40% Silk

Market
High End

Aftercare
Dry Clean Only

Nanushka



RRP
£675.00

Size Options
XxS, S, M, L, XL

Material Quality
78% Triacetate
22% Polyester

Market
High End

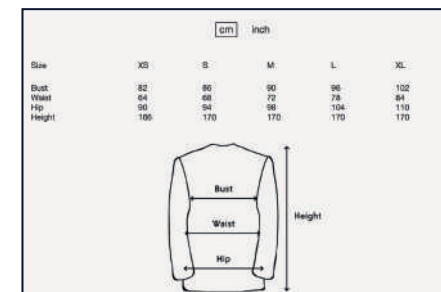
Aftercare
Hand wash
Do not bleach
Do not tumble dry
Iron low heat (110°)
Gentle Dry Clean

Standard (Zadig&Voltaire)	UK	Mid Standard
XXS	4	-
XS	6	XS/S
S	8	XS/S
M	10	M/L
L	12	M/L
XL	14	-
XXL	16	-

This garment holds some similarities however is a more simplified version of this Detachable Jumpsuit. The size guide is too large here, would there need to be an XXL for an oversized jumpsuit? Similarities can be seen in the drape and the elasticated waistband. This garment fits "true to size" and is designed for a loose fit with a tight fit at the waist. It is made with a lightweight satin.

Size	UK	Bust		Waist		Hips	
		Inches	CM	Inches	CM	Inches	CM
XXS	4	31 - 32	79 - 81	24 - 25	61 - 63.5	35 - 36	89 - 91.4
XS	4 - 6	32.5 - 33.5	82.5 - 85	25 - 26	63.5 - 66	36 - 37	91.4 - 94
S	6 - 8	34 - 35	86.4 - 89	27 - 28	66 - 68.6	37 - 38	94 - 96.5
M	10 - 12	36 - 38	89 - 91.4	29 - 30	71 - 73.7	39 - 40	99 - 101.6
L	12 - 14	39 - 40	91.4 - 94	31 - 32	73.7 - 76.2	42 - 43	101.6 - 104
XL	16 - 18	41 - 43	104 - 109	34 - 35	86 - 89	44 - 45	111 - 114
XXL	20 - 22	44 - 45	111 - 114	36 - 37	91 - 94	47 - 48	119 - 122

The sleeves here can be viewed as a more controlled drape compared to Detachable Jumpsuit sleeves. This should be considered if Jumpsuit is taken into Batch Production. Use this size guide measurement points as reference for Detachable Jumpsuit size guide as it is a similar garment sitting in the same market. The fabric property consists of 40% silk.



Consider using the size chart from this garment for Detachable Jumpsuit as adding height in it is an extra touch, something consumers may look for when purchasing a couture garment. Use the same grading

* Measurements will be smaller than the ones within this comparative page due to the jumpsuit being more fitted and elasticated

Designer Tayler Spring

Season S/S 2022

Garment Detachable Jumpsuit

Collection 'The Queen's Army'

Size Range S | M | L | XL

Garment Style Number TS -021 - 2022

Page Name Garment Evaluation

Issue Date 10.01.2021

Last Updated 10.05.2021

After conducting research into similar garments within Comparative Product Analysis, it is clear that for this product to be sold within high end fashion, the quality of the fabric and finishes will need to be more opulent.

For this garment to reach the standard a consumer would expect, the sourcing of the chains should be at a higher standard, look into chains that are more strong, durable and gold coated as opposed to sprayed gold - should be more robust.

For better fabric finish and quality, a more luxurious and expensive satin might be worth sourcing, it would be worth using a polyblend - instead of 100% polyester, perhaps 60% polyester and 40% silk. Even having a 15% triacetate blend as this would help with the elasticity of the fabric (which would be useful on the channels and waistbands) and it allows the fabric to become resilient to wrinkles which is an issue with this drape and fabric.



The epaulette channels do not support the weight of the chains as well, perhaps there should have also been channels with boning underneath the epaulettes to give them more support

The silhouette of this garment is very dramatic and powerful, so when taking into batch production consider toning the drape down to a more commercial look. Based off of the Comparative Product Analysis perhaps reduce the volume.

Designer Tayler Spring

Season S/S 2022

Garment Detachable Jumpsuit

Collection 'The Queen's Army'

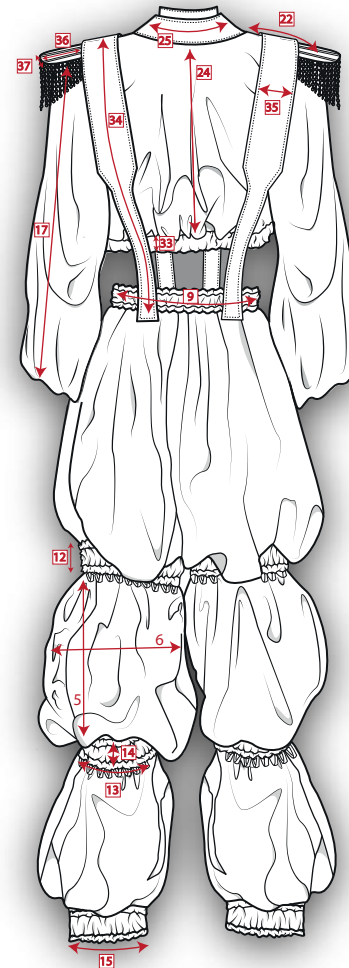
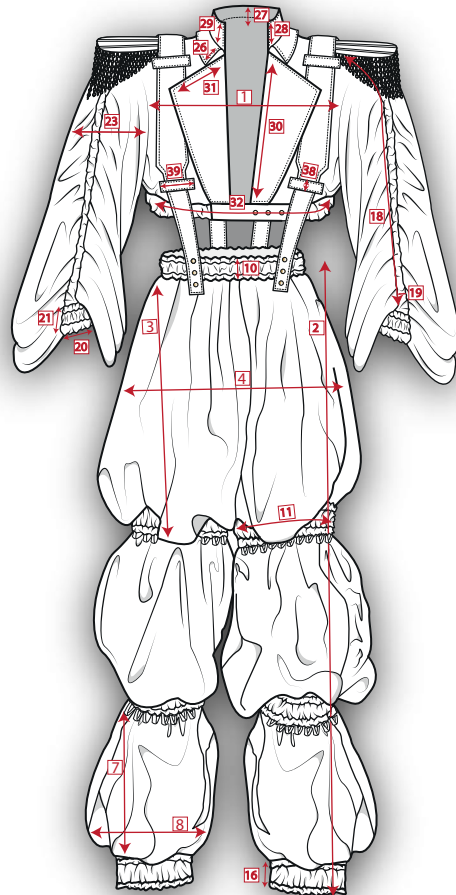
Size Range S | M | L | XL

Garment Style Number TS -021 - 2022

Page Name Measurement Page

Issue Date 10.01.2021

Last Updated 10.05.2021



	MEASUREMENTS IN CENTIMETRES	WHERE TO MEASURE FROM	Size 10-12
1	CHEST	17cm from SNT, straight across	34cm
2	TROUSER LENGTH	Top of Trouser Waistband to Bottom of Trouser Cuff	128cm
3	TROUSER TOP SECTION LENGTH	Across the Trouser Top Section (The first section below the trouser waistband, measure flat from side to crotch seam)	33cm
4	TROUSER TOP SECTION WIDTH	Bottom of Trouser Waistband to top of Trouser Top Channel	44cm
5	TROUSER MIDDLE SECTION LENGTH	Across Trouser Middle Section on one leg	26cm
6	TROUSER MIDDLE SECTION WIDTH	Bottom of Trouser Top Channel to the top of Trouser Middle Channel	25cm
7	TROUSER BOTTOM SECTION LENGTH	Across Trouser Bottom Section on one leg	28cm
8	TROUSER BOTTOM SECTION WIDTH	Bottom of Trouser Middle Channel to top of Trouser Cuff	35cm
9	TROUSER WAISTBAND LENGTH	Straight across the Trouser Waistband	30cm
10	TROUSER WAISTBAND WIDTH	Straight down the Trouser Waistband	6cm
11	TROUSER TOP CHANNEL LENGTH	Straight across the Trouser Top Channel	21cm
12	TROUSER TOP CHANNEL WIDTH	Straight down the Trouser Top Channel	6cm
13	TROUSER MIDDLE CHANNEL LENGTH	Straight across the Trouser Middle Channel	18cm
14	TROUSER MIDDLE CHANNEL WIDTH	Straight down the Trouser Middle Channel	5cm
15	TROUSER CUFF LENGTH	Straight across the Trouser Cuff	15cm
16	TROUSER CUFF WIDTH	Straight down the Trouser Cuff	5cm
17	SLEEVE LENGTH	Sleeve head point to top of cuff (measure down sleeve seam for accurate draple length)	68cm
18	SLEEVE CHANNEL LENGTH	From top of Sleeve Channel to the bottom	51cm
19	SLEEVE CHANNEL WIDTH	Across Sleeve Channel	4cm
20	CUFF LENGTH	53cm down from sleeve head, then measure across	11cm
21	CUFF WIDTH	53cm down from sleeve head, then measure to end of cuff	5cm
22	SHOULDER	SNT to sleeve head point, along seam	14cm
23	BICEP	15cm down from sleeve head point, then measure across	37cm
24	JACKET LENGTH	From highest collar point, straight down the CB to the hem	60cm
25	DROP COLLAR DEPTH	From lowest collar point to highest point at CB	9cm
26	DROP COLLAR LENGTH AT NECK SEAM	Across the collar at neck seam point	40cm
27	STAND COLLAR DEPTH	From lowest collar point to highest point at CB	5.5cm
28	STAND COLLAR DEPTH AT POINT	Measure the deepest point of collar, this would be where the collar meets the lapel	8cm
29	STAND COLLAR LENGTH AT NECK SEAM	Measure across the collar at neck seam point	43cm
30	LAPEL LENGTH	Top of lapel to top of Jacket Waistband	31cm
31	LAPEL WIDTH	From lapel point to fold	15cm
32	JACKET WAISTBAND LENGTH	Across Jacket Waistband	97cm
33	JACKET WAISTBAND WIDTH	From top of Jacket Waistband to bottom	4cm
34	MILITARY STYLED STRAPS LENGTH	Measure lengthways across Straps from one edge to the other	106cm
35	MILITARY STYLED STRAPS WIDTH	Across the middle of the Straps, across the wider section	7cm
36	EPAULETTE LENGTH	Across epaulettes, from one end to the other, lengthwise	19cm
37	EPAULETTE WIDTH	Across epaulettes, from one end to the other, widthwise	8cm
38	STRAP LOOP WIDTH	7cm up from top of Jacket Waistband CF, then measure across straps	2cm
39	STRAP LOOP LENGTH	7cm up from top of Jacket Waistband CF, then measure width of straps	9cm
40	JACKET HEIGHT	Measure from bottom of Jacket Waistband to top of Stand Collar	59.5cm

Designer Tayler Spring

Season S/S 2022

Garment Detachable Jumpsuit



Collection 'The Queen's Army'

Size Range S | M | L | XL

Garment Style Number TS -021 - 2022



Page Name Size Chart

Issue Date 10.01.2021

Last Updated 10.05.2021

Measurements may vary due to the drape within the garment and the elastic

	S	M	L	XL
Bust	42cm	46cm	52cm	60cm
Waist	30cm	34cm	40cm	46cm
Hips	44cm	48cm	54cm	60cm
Biceps	37cm	38cm	39cm	42cm
Cuff Width	5cm	5.5cm	6cm	7cm
Cuff Length	11cm	12cm	13cm	15cm
Trouser Height	128cm	128cm	128cm	128cm
Jacket Height	59.5cm	128cm	128cm	128cm

Measurements for points where the elastic has been fully stretched

	S	M	L	XL
Waist	50cm	54cm	60cm	66cm
Cuff Length	20cm	21cm	22cm	24cm

Designer Tayler Spring

Season S/S 2022

Garment Detachable Jumpsuit

Collection 'The Queen's Army'





Size Ranges | M | L | XL

Garment Style Number TS -021 - 2022

Page Name Bill of Materials

Issue Date 10.01.2021

Last Updated 10.05.2021

Satin Backed Crepe (Navy Blue)	Supplier: Abakhan Fabrics	Amount Needed: 8 Metres	Fabric Properties: 100% Polyester	
	Use For: Main Body Pattern Pieces	Cost Per Metre: £8.75	Total Costing: £70.00	
Duchess Satin (Wine Red)	Supplier: Abakhan Fabrics	Amount Needed: 1.5 Metre	Fabric Properties: 100% Polyester	
	Use For: Channels, Cuffs Straps, Pockets, Collar	Cost Per Metre: £8.99	Total Costing: £17.98	
Gold Snap Poppers	Supplier: Trimming Shop	Amount Needed: 50 pcs	Item Properties: Gold Metal	
	Use For: CF Zip	Cost Per 20 pcs: £7.99	Total Costing: £7.99	
Interfacing (Firm)	Supplier: Stabler International	Amount Needed: 2 Metre	Fabric Properties: Firm Standard Iron On	
	Use For: Straps Strap Loops, Lapel, Collar	Cost Per Metre: £5.00	Total Costing: £10.00	
Elastic (25mm)	Supplier: Minerva	Amount Needed: 4 Metre	Fabric Properties: White Elastic 1mm	
	Use For: Channels	Cost Per Roll: £1.79	Total Costing: £7.16	
Elastic (50mm)	Supplier: William Gee	Amount Needed: 3 Metres	Fabric Properties: White Elastic 40mm	
	Use For: Cuffs and Waistbands	Cost Per Metre: £1.80	Total Costing: £5.40	
Navy Twist Cord (40mm)	Supplier: Abakhan Fabrics	Amount Needed: 1 Metre	Fabric Properties: Woven Polyester	
	Use For: Epaulettes	Cost Per Metre: £0.58	Total Costing: £0.58	
Navy Ribbon (40mm)	Supplier: Hot Pink Haberdashery	Amount Needed: 3 Metre	Fabric Properties: Double Faced Polyester Satin	
	Use For: Trouser Chain Loops	Cost Per Metre: £3.99	Total Costing: £15.96	
Gold Chains (4.0mm)	Supplier: The Bead Shop	Amount Needed: 8 Metre	Item Properties: Brass Base	
	Use For: Trousers and Epaulettes	Cost Per Metre: £13.50	Total Costing: £108.00	
Featherlite Boning	Supplier: Minerva	Amount Needed: 1 Pack	Item Properties: Hemline Boning	
	Use For: Epaulette Boning Channels	Cost Per Pack: £3.89	Total Costing: £3.89	
8oz Wadding	Supplier: Samuel Taylors	Amount Needed: 1 Metre	Fabric Properties: Wadding	
	Use For: Epaulette Filling	Cost Per Metre: £5.50	Total Costing: £5.50	

Total Price for BOM:
£252.46

RRP: £399.99

= Profit Per Garment: £147.53

Designer Tayler Spring

Season S/S 2022

Garment Detachable Jumpsuit



Collection 'The Queen's Army'

Size Range S | M | L | XL

Garment Style Number TS -021 - 2022



Page Name Bill Of Materials

Issue Date 10.01.2021

Last Updated 10.05.2021

Manufacturing Proposal

"The Queen's Army"

This collection is a reaction to when Monarchy meets Military, creating powerful opulent outfits to make consumers feel confident, sexy and superior - to be ready for battle as soon as they put on their suit of armour. The outfits within this collection are aimed at a high end market, for consumers willing to pay that little bit extra for attention to detail and immaculate finishes.

The garments will be manufactured in-house in one of three London ateliers (Soho, West Hampstead or Kensington) for custom pieces. Custom pieces include garments such as our Satin Jumpsuit as this item is a one-off piece that is made-to-measure due to the complexity within the drape, detail and finishings such as the gold chains - we do not carry samples such as this online due to the longevity of creating these pieces in multiple sizes for our online store in our XS-L size range. We do however offer more commercial styles of our one-off pieces where we have toned down the dramatic silhouette of the garment and have not included our signature chain draped epaulettes. Our commercial reactions to our one-off pieces can be found on our website and are available in sizes Extra Small to Large, these are constructed within a production factory in London - Unlimited Fashion, a family owned company whom are highly skilled with tackling more intricate garments composed of silks and satins. These will be batch-produced and we make sure to always keep an eye out on our website to make sure sizes are never low!

For our one-off pieces we like to bring the client into one of our ateliers to understand their desires and what it is they want to feel when they wear our clothing. Our collection 'The Queen's Army' is purposely intended to bring out one's most inner confidence, to make them feel seen, heard fierce and powerful. This is what our most two recent outfits have been conceptualised around, to make the user feel that not only are they wearing our custom pieces, but they are putting on their own suit of armour that changes the way they view the world. We currently are only offering custom pieces that we are able to adapt from our two most recent outfits, our Chain Drape Dress and our Satin Jumpsuit.

Clients will be able to sit down with us and view materials, colour boards and if they wish to have our signature chains and epaulettes then we have multiple different sized chains, as well as different colour and weight depending on how comfortable the user is with having additional weight on their garment when out in it. In some situations if the client wishes, we will bring them to the top of the line fabric and trimmings stores where we source our materials for custom pieces and therefore the client will be able to see in person the quality they will be receiving within their sample and they will be able to choose in person their trimmings and fabrics as it isn't always the same showing them through a screen!

Our turnaround for custom pieces is usually around 4 weeks, this is from the initial stage of discussing options with the client to handing them garment over to them as they tell us that it was worth the wait! We are a team of 4 head designers, 5 junior design assistants and 4 garment techs spread across our three ateliers which means that your garment is always being worked on by one of our enthusiastically driven and talented team members! For London based clients we try to offer a quicker service as this would not have to involve shipping, we would personally deliver your bespoke item to your door free of charge! For this we can usually have your garment to you within three and a half weeks if not sooner, depending on how busy our ateliers are at the time! We offer a money back guarantee service, even for bespoke items, which shows how confident we are within our goal to deliver 100% positive client satisfaction.

As well as an online presence, we have department shops in both North and South London where we occasionally hold one (or two if you're lucky!) of our one-off pieces that we have created as press pieces but then the client decided not to use our garments. We do not price these the same as if they were custom made and offer them at an extremely affordable rate!

Thank you,
Tayler Spring Designs Team

Designer Tayler Spring

Season S/S 2022

Garment Satin Drapped Jumpsuit

Collection 'The Queen's Army'

Size Range S | M | L | XL

Garment Style Number TS -021 - 2022

Page Name Critical Pathway - Custom Piece

Issue Date 10.01.2021

Last Updated 10.05.2021

	Week One	Week Two	Week Three	Week Four	Week Five	Week Six	Week Seven
Research	Red						
Designs are being tied together to form a final outcome	Red	Red					
First toile		Red	Red				
First fitting		Red	Red				
Prototype Amendments/ Strike Offs		Red	Red				
Design team begin logging information into Tech Packs	Red	Red	Red				
Lay Plan and fabric sourcing		Red	Red	Red			
Second fitting		Red	Red				
Second toile			Red	Red			
Update final Tech Pack for Factory			Red	Red			
toile sent to sample machinist			Red	Red			
SMS Production			Red	Red	Red		
Sample back from machinist			Red	Red	Red		
Final Alterations and fittings			Red	Red	Red		
Final toile complete			Red	Red	Red		
Sample sent off to factory for batch production			Red	Red	Red		
Production expected to be finished			Red	Red	Red	Red	
Notify client garment is ready			Red	Red	Red	Red	
Client collects garment and final payment is taken			Red	Red	Red	Red	Red

This Critical Pathway for Tayler Spring Designs is not for one off pieces for clients. This is in reference to the more tailored jumpsuit that will reflect comparative product analysis.

The jumpsuit is a statement piece and is more desirable for one off events and for those who really want to make a statement on a night out! Therefore we will be offering a more simplified version of the jumpsuit by reducing the drape within the garment and not having the option of chains or epaulettes, this will be at a lower RRP due to the reduction in production costs.

Designer Tayler Spring

Season S/S 2022

Garment Satin Drapped Jumpsuit

Collection 'The Queen's Army'

Size Range S | M | L | XL

Garment Style Number TS -021 - 2022

Page Name Critical Pathway - Batch Production

Issue Date 10.01.2021

Last Updated 10.05.2021

	Week One	Week Two	Week Three	Week Four
Show client designs and discuss with them whether they want the dramatic drape of toned down - if so by how much and whether they want to keep it as a two piece jumpsuit or one	Red			
Discuss colour (advise that fabric should stay the same for similar drape) and discuss colour and thickness of chains if client desires them on the garment. Take any personal alterations such as length and weight (duchess satin for some parts can be substituted for satin backed crepe)	Red			
Put together mood boards with clients fabric choices etc for their approval	Red			
Take client's measurements	Red			
toile Garment	Red	Red		
Bring client in for fitting		Red		
Make further amendments if client wishes		Red		
Source Fabric and chains		Red		
Lay Plan		Red		
Send sample off to machinist to be constructed			Red	
Garment arrives back in studio			Red	
Design team sort out final details such as hand sewing chains on epaulettes and threading chains through trouser loops			Red	Red
Notify client garment is ready				Red
Client collects garment and final payment is taken				Red

This Critical Pathway for Tayler Spring Designs is for one off custom pieces that will reflect the product within this Specification Portfolio.

This is a more personal customer service experience as the client will get to work one-on-one with the designer to create their own custom jumpsuit and join the exclusive Queen's Army! Client will receive top quality service as the garment will be set at a higher RRP than the commercial version of this jumpsuit due to the complex nature of the construction and the time the Design Team will be putting into the garment to make sure it matches the client's standards and they are satisfied with the end result.

Designer Tayler Spring

Season S/S 2022

Garment Satin Drapped Jumpsuit

Collection 'The Queen's Army'

Size Range S | M | L | XL

Garment Style Number TS -021 - 2022

Page Name Critical Pathway - FMP

Issue Date 10.01.2021

Last Updated 10.05.2021

	Week One	Week Two	Week Three	Week Four	Week Five	Week Six	Self Directed Study	Week One	Week Two	Week Three	Week Four	Week Five	Easter	Week Six	Week Seven
Research	█	█													
Design Development	█	█													
Finalise Designs			█												
Updating Process Journal	█	█	█	█	█	█		█	█	█	█	█		█	█
Sourcing Trimmings Chains and Fabric for both outfits		█	█												
Outfit 1: Toiling		█	█	█											
Outfit 1: Fittings		█	█	█	█										
Outfit 1: Final Toile Amendments			█	█	█			█							
Outfit 1: Finalise Patterns and Lay Plan			█	█	█			█	█						
Send off garment to sample machinist			█	█	█					█					
Updating Tech Pack			█	█	█				█	█	█				
Outfit 2: Toiling					█			█		█					
Outfit 2: Fittings								█	█						
Outfit 2: Final Toile Amendments									█	█					
Outfit 2: Finalise Patterns										█	█				
Produce Outfit 2										█	█	█			
Finalising Process Journal										█	█	█		█	█
Product Outcome Shoot													█	█	
Produce Film												█		█	
Produce Portfolio Boards												█	█	█	█

This Critical Pathway is for Final Major Project focusing specifically on Term Time Dates.