

**HOUSE OF COLOUR**  
**SPECIFICATION PORTFOLIO**  
**TAYLER SPRING**



# CONTENT

DESIGN ROOM SPECIFICATION.....	3
CLOTH ANALYSIS.....	7
CUTTING ROOM SPECIFICATION.....	8
PRODUCTION ROOM SPECIFICATION.....	12
LAY PLAN.....	25
SIZE CHARTS.....	29
BILL OF MATERIALS.....	32
Manufacturing Propo.....	33
CRITICAL PATH.....	34

**Designer** Taylor Spring

**Season** A/W 2021

**Garment** Ruched Oversized Puffer Coat

**Collection** 'House of Colour'

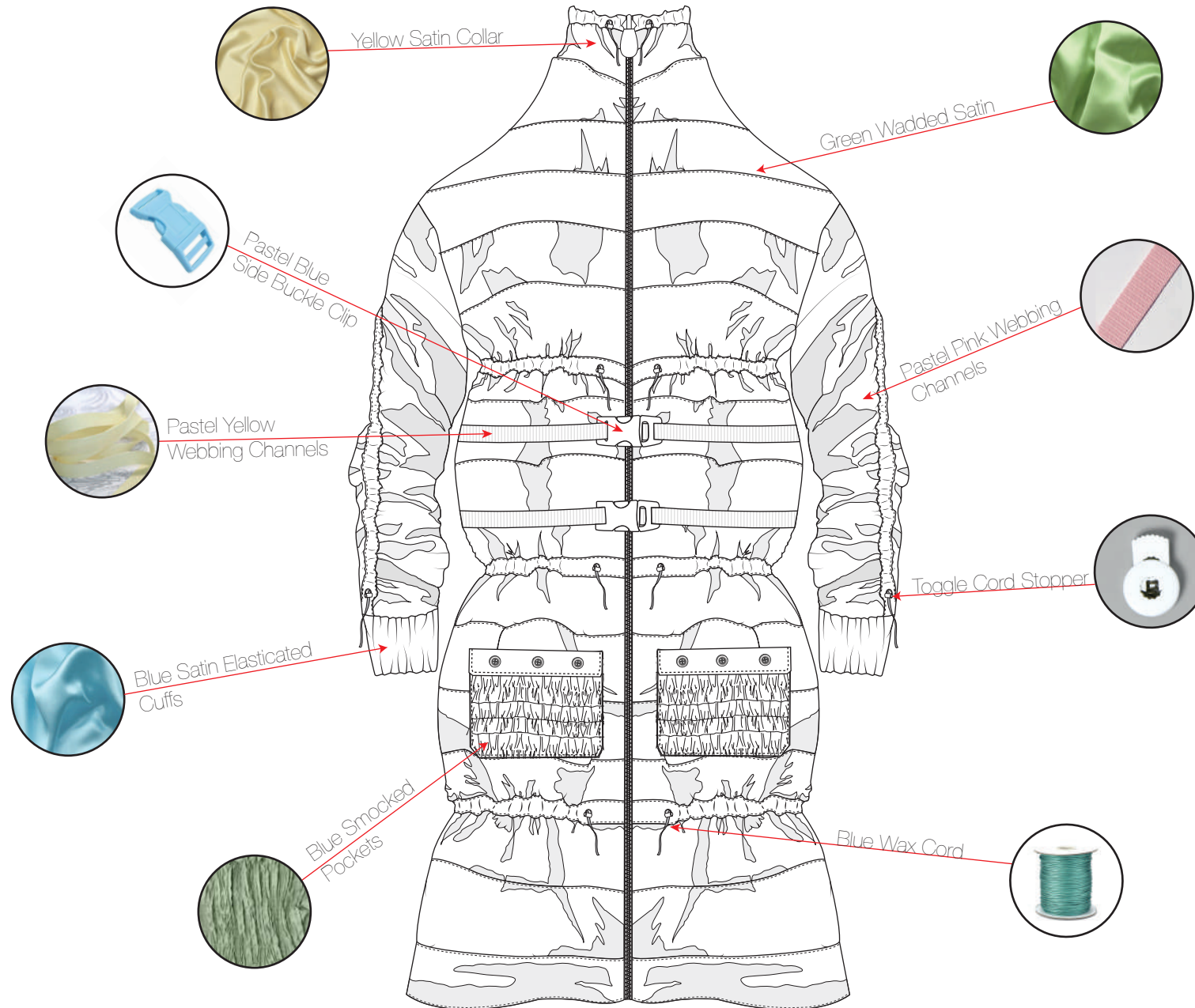
**Size Range** 8-10 | 12-14 | 16-18

**Garment Style Number** TS -020 - 2021

**Page Name** Design Room Spec

**Issue Date** 01.12.2020

**Last Updated** 08.12.2020



**Designer** Taylor Spring

**Season** A/W 2021

**Garment** Ruched Oversized Puffer Coat

**Collection** 'House of Colour'

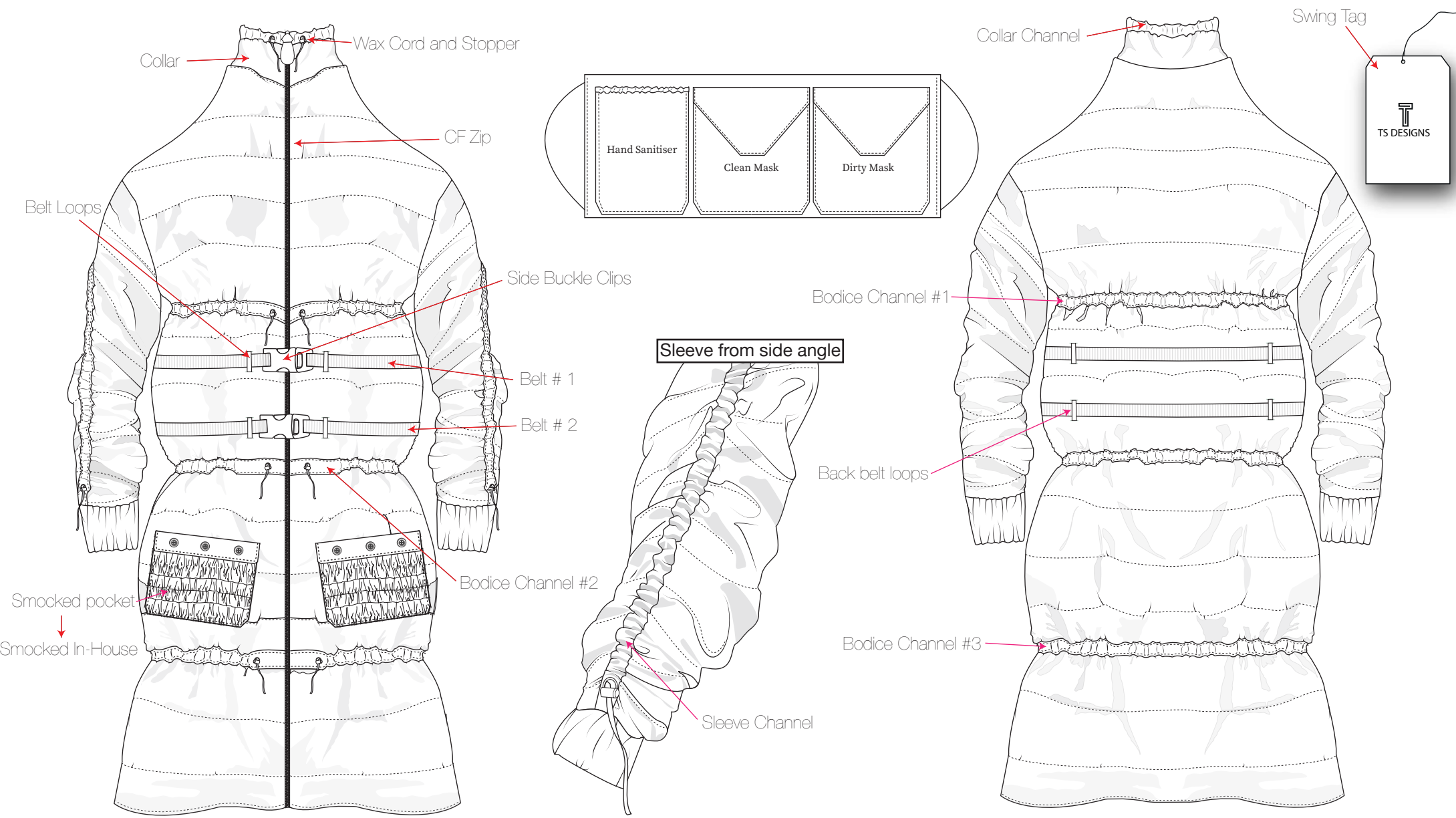
**Size Range** 8-10 | 12-14 | 16-18

**Garment Style Number** TS -020 - 2021

**Page Name** Design Room Spec - CAD analysis

**Issue Date** 01.12.2020

**Last Updated** 08.12.2020



**Designer** Tayler Spring

**Season** A/W 2021

**Garment** Ruched Oversized Puffer Coat

**Collection** 'House of Colour'

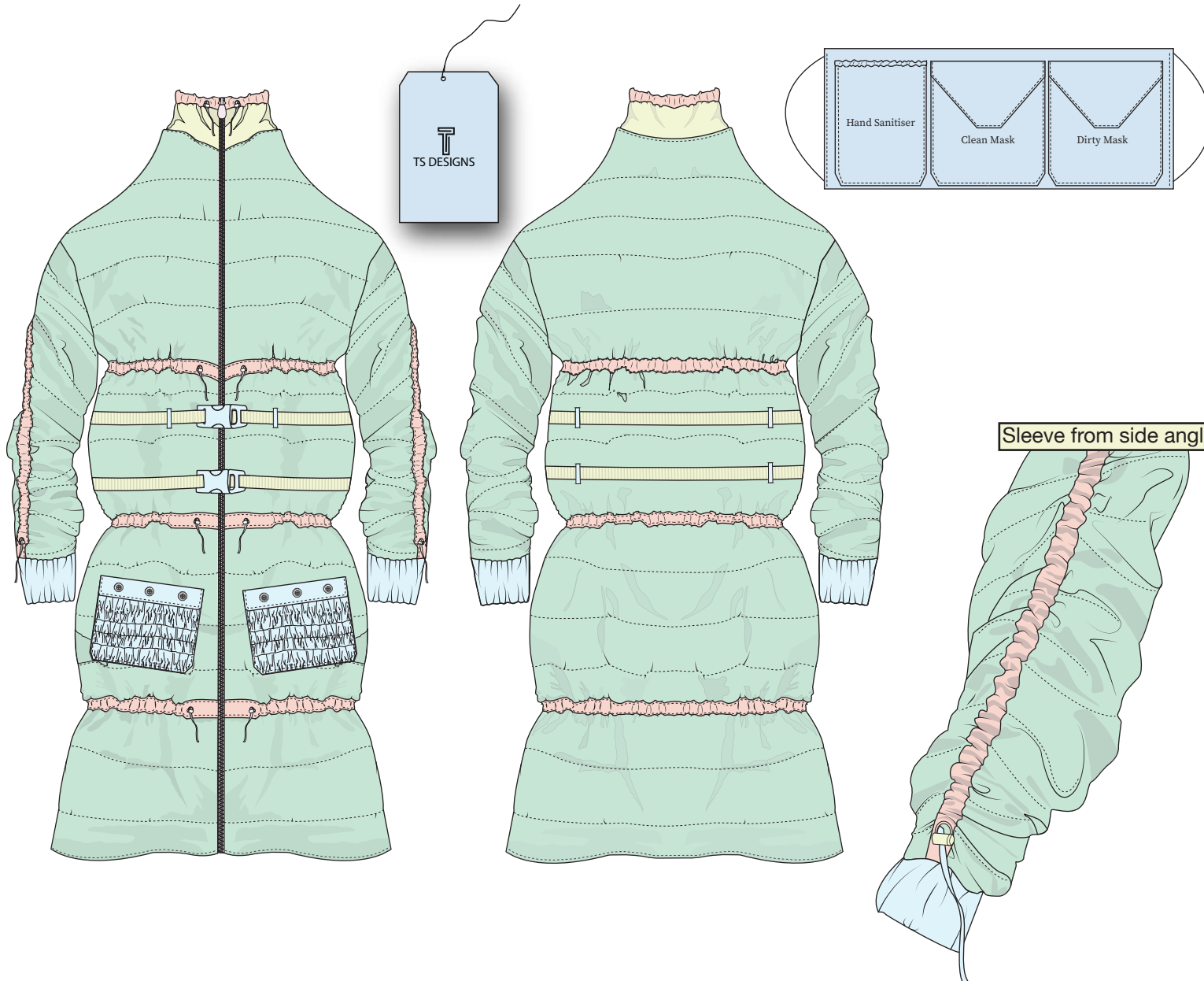
**Size Range** 8-10 | 12-14 | 16-18

**Garment Style Number** TS -020 - 2021

**Page Name** Design Room Spec - Coloured CAD's

**Issue Date** 01.12.2020

**Last Updated** 08.12.2020



**Main Fabric**

- Collar  
PANTONE 11-0714 TCX  
Mander Yellow
- Side Panel  
Sleeves  
Centre Front  
Centre Back  
PANTONE 565 C
- Pockets  
Cuffs  
PANTONE 888 C
- Lining  
PANTONE 686 C

**Trimmings**

- Belts  
120's Thread  
PANTONE 11-0714 TCX  
Mander Yellow
- Main Fabric  
120's Thread  
PANTONE 565 C
- Belt Loops  
120's Thread  
PANTONE 888 C
- Lining  
Channels  
120's Thread  
PANTONE 686 C

**Designer** Taylor Spring

**Season** A/W 2021

**Garment** Ruched Oversized Puffer Coat

**Collection** 'House of Colour'

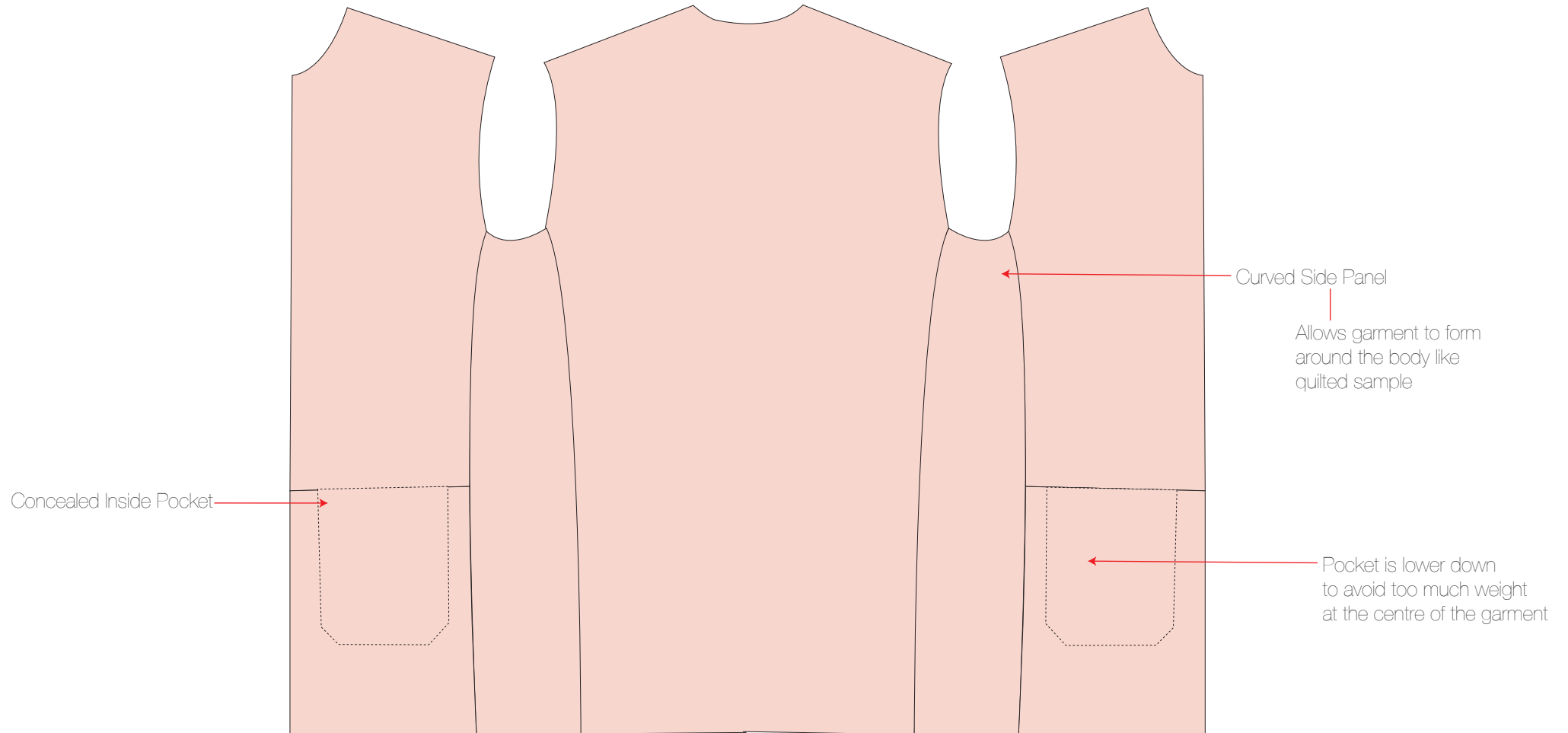
**Size Range** 8-10 | 12-14 | 16-18

**Garment Style Number** TS -020 - 2021

**Page Name** Design Room Spec - Lining

**Issue Date** 01.12.2020

**Last Updated** 08.12.2020



**Designer** Tayler Spring

**Season** A/W 2021

**Garment** Ruched Oversized Puffer Coat

**Collection** 'House of Colour'

**Size Range** 8-10 | 12-14 | 16-18

**Garment Style Number** TS -020 - 2021

**Page Name** Cloth Analysis

**Issue Date** 01.12.2020

**Last Updated** 08.12.2020

#### Polyester Satin



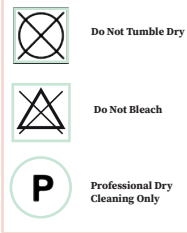
Satin Fibre Content  
100% Polyester  
The structure of this fabric is Satin Weave  
The Satin Weave can be seen to give a lustrous appearance

#### Polyester Wadding 8oz



Polyester Fibre Content  
100% Polyester  
Man-Made Fibre

#### Care Label



### Shower Proof Testing

The garment does not have a waterproof finish, therefore a showerproofness test should be conducted to see if the water soaks through the fabric. If so, a recommendation would be to use a waterproof finish on the garment to avoid this issue.

### Colour Fastness to washing Testing

The use of pastel colours within this garment aims to create a sense of calmness for the user. Therefore, colour is a key element and a colour fastness to washing test needs to be carried out to make sure the colour of the fabric does not fade over time.

To make sure that colour does not fade or run when washed, the garment will be subjected to a colour fastness test. It can be predicted that although the garment will be subjected to this test, the colour may not run, due to the dye and fabric integration within polyester as the fibre content holds dye extremely well.

### Abrasion Testing

As the garment is outerwear, abrasion testing needs to be conducted to make sure that the garment is resistant to the wear-and-tear of an outerwear coat.

### Thermal Conductivity

Thermal comfort is important to allow the user to feel comfortable and better within themselves. Therefore, To see if the garment is fit for purpose by keeping the user warm and snug, testing will need to be conducted using the tog meter. This will measure the thermal conductivity of the garment, giving an understanding whether this thermal conductivity is good for winter or summer. This is important as the level of thermal conductivity will address how comfortable and secure the user will feel within the garment.

### Abrasion and Strength Testing

As the garment is outerwear, abrasion testing needs to be conducted to make sure that the garment is resistant to the wear-and-tear of an outerwear coat. Strength testing can also be conducted, to make sure that when the garment is tightened using the channels, that it does not burst due to the tension and pressure caused by the ruched channels. It can be predicted that the garment will succeed within the strength test as polyester is very strong. However, as it is a satin weave, with a lot of yarns sitting on the face of the fabric, the fabric may snag more easily. Therefore, it would also be useful to test the snagging as this may make the material more susceptible to abrasion and snagging.

**Designer** Tayler Spring

**Season** A/W 2021

**Garment** Adjustable Oversized Puffer Coat

**Collection** 'House of Colour'

**Size Range** 8-10 | 12-14 | 16-18

**Garment Style Number** TS -020 - 2021

**Page Name** Cutting Room Spec - Quilting

**Issue Date** 01.12.2020

**Last Updated** 08.12.2020



### Accurately cut the pieces

Once the fabric has been quilted, the pieces need to be placed meticulously onto the fabric. This is to make sure that the quilting lines all match up once the pieces have been stitched together.

The seams that will be sewn together should sit on the same quilting lines.



**Designer** Tayler Spring  
**Season** A/W 2021  
**Garment** Adjustable Oversized Puffer Coat

**Collection** 'House of Colour'  
**Size Range** 8-10 | 12-14 | 16-18  
**Garment Style Number** TS -020 - 2021

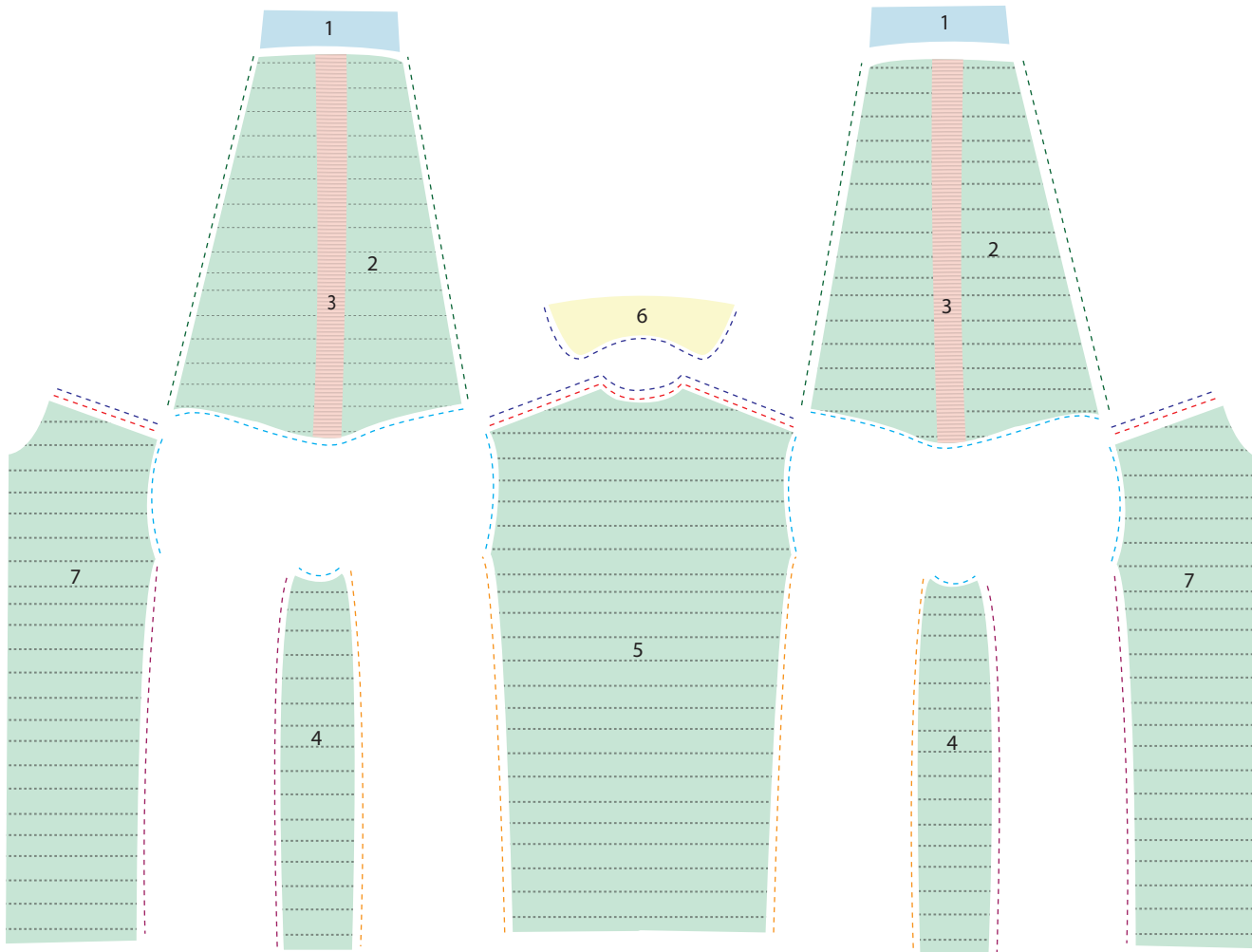
**Page Name** Cutting Room - Outer Pieces

**Issue Date** 01.12.2020

**Last Updated** 08.12.2020



### Garment Specification: Outer Pieces



1. Cuffs
  - ↳ Cut 1 pair on pastel blue polyester satin. The Blue satin will not be pre-sewn to wadding
2. Sleeves
  - ↳ Cut 1 pair on pastel green polyester satin that has been sewn to wadding and has been pre-quilted
3. Webbing
  - ↳ Cut 1 pair (80cm long) to be pre-sewn onto sleeve before garment is sewn together
4. Side Panel
  - ↳ Cut 1 pair on pastel green polyester satin that has been sewn to wadding and has been pre-quilted
5. Centre Back
  - ↳ Cut 1 piece on pastel green polyester satin that has been sewn to wadding and has been pre-quilted
6. Collar Panel
  - ↳ Cut 1 piece on pastel yellow polyester satin that has been pre-sewn to wadding
7. Centre Front
  - ↳ Cut 1 pair on pastel green polyester satin that has been sewn to wadding and pre-quilted

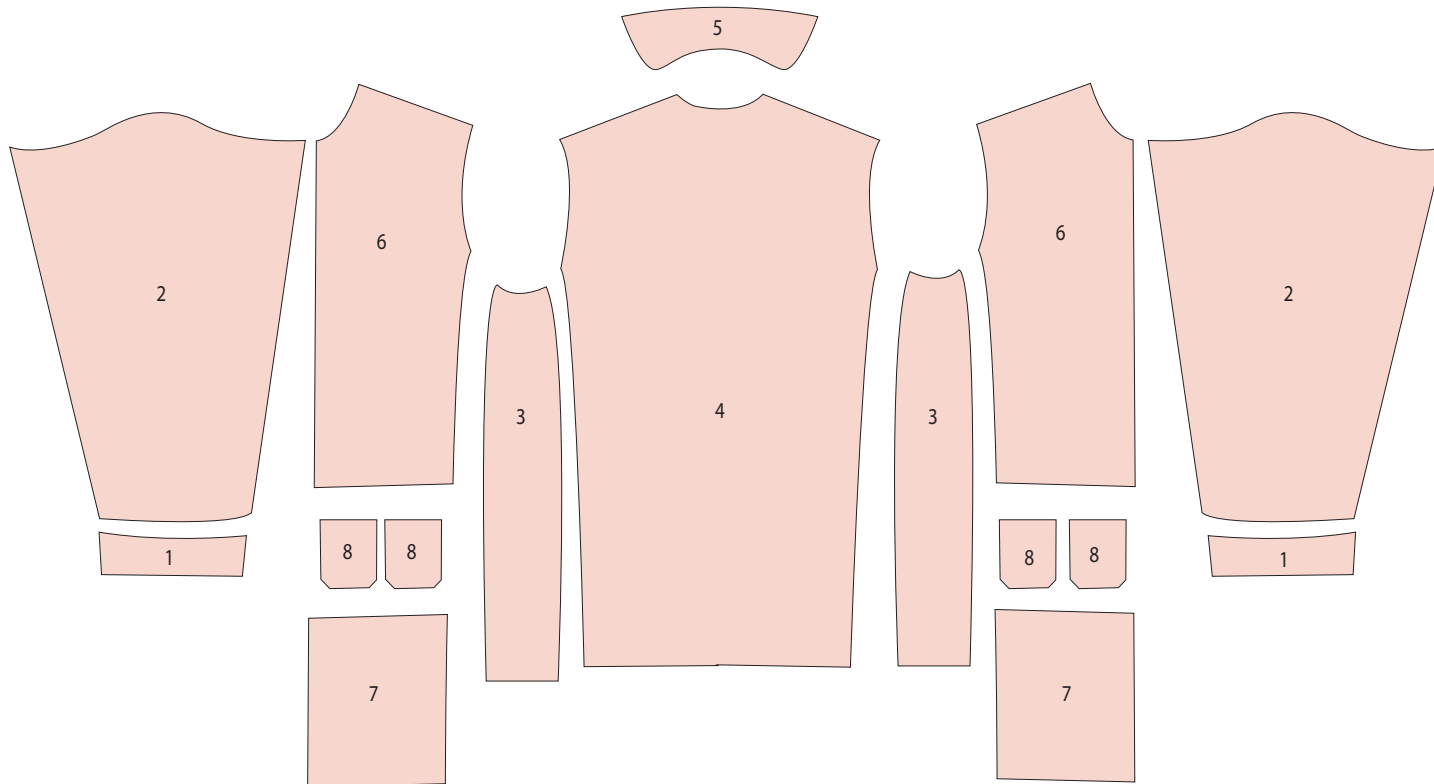
**Designer** Tayler Spring  
**Season** A/W 2021  
**Garment** Adjustable Oversized Puffer Coat

**Collection** 'House of Colour'  
**Size Range** 8-10 | 12-14 | 16-18  
**Garment Style Number** TS -020 - 2021

**Page Name** Cutting Room Spec - Lining  
**Issue Date** 01.12.2020  
**Last Updated** 08.12.2020



Garment Specification: Lining Pieces



1. Cuffs  
↳ Cut 1 pair on silk habotai lining.
2. Sleeves  
↳ Cut 1 pair on silk habotai lining.
3. Side Panels  
↳ Cut 1 pair on silk habotai lining.
4. Centre Back  
↳ Cut 1 pair on silk habotai lining.
5. Collar Panel  
↳ Cut 1 pair on silk habotai lining.
6. Centre Front Top Panel  
↳ Cut 1 pair on silk habotai lining.
7. Centre Front Bottom Panel  
↳ Cut 1 pair on silk habotai lining.
8. Lining Pockets  
↳ Cut 2 pairs on silk habotai lining.

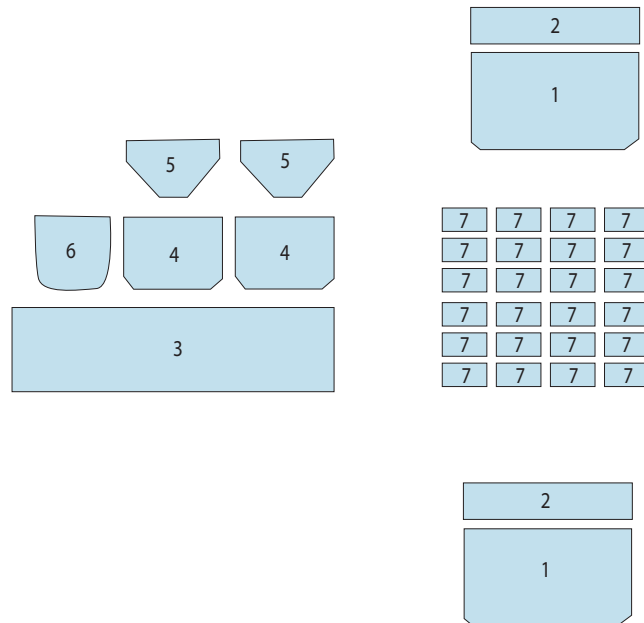
**Designer** Tayler Spring  
**Season** A/W 2021  
**Garment** Adjustable Oversized Puffer Coat

**Collection** 'House of Colour'  
**Size Range** 8-10 | 12-14 | 16-18  
**Garment Style Number** TS -020 - 2021

**Page Name** Cutting Room Spec - Pockets  
**Issue Date** 01.12.2020  
**Last Updated** 08.12.2020



Garment Specification: Pocket and Belt Loop Pieces



1. Main Centre Front Pocket  
↳ Cut 2 pairs - 1 pair on smoked pastel blue polyester satin and 1 pair on pastel blue polyester satin
2. Main Centre Front Pocket Flap  
↳ Cut 2 pairs on pastel blue polyester satin and 1 pair on firm interfacing.
3. Roll-Up Pocket: Base Piece  
↳ Cut 1 pair on pastel blue polyester satin and 1 piece on firm interfacing.
4. Roll-Up Pocket: Mask Pockets  
↳ Cut 2 pairs on pastel blue polyester satin and 1 pair on firm interfacing
5. Roll-Up Pocket: Mask Pocket Flaps  
↳ Cut 2 pairs on pastel blue polyester satin and 1 pair on firm interfacing
6. Roll-Up Pocket: Elasticated Pocket  
↳ Cut 1 pair on pastel blue polyester satin.
7. Belt Loops  
↳ Cut 12 pairs on blue polyester satin and 6 pairs on firm interfacing.

**Designer** Tayler Spring

**Season** A/W 2021

**Garment** Adjustable Oversized Puffer Coat

**Collection** 'House of Colour'


**Size Range** 8-10 | 12-14 | 16-18

**Garment Style Number** TS -020 - 2021

**Page Name** Garment Breakdown

**Issue Date** 01.12.2020

**Last Updated** 08.12.2020

Operation number	Operation	Machine	Pieces used during operation	Fabric and Materials	Thread 	Seam Width	Trim Off	Stitch per CM	Needle size	Comments
1	Interface a 2cm x 2cm piece of firm interfacing onto webbing pieces for bodice channels 5cm from both edges	N/A	150cm Webbing (x3)	Pastel Pink Webbing (3cm) Firm Interfacing	N/A	N/A	N/A	N/A	N/A	Make sure interfacing does not peel off
2	Interface a 2cm x 2cm piece of firm interfacing onto webbing pieces for sleeve channels 5cm from one edge	N/A	80cm Webbing (x2 pieces)	Pastel Pink Webbing (3cm) Firm Interfacing	N/A	N/A	N/A	N/A	N/A	Make sure interfacing does not peel off
3	Interface a 2cm x 2cm piece of firm interfacing onto webbing pieces for collar channels 5cm from both edges	N/A	65m Webbing (x1)	Pastel Pink Webbing (3cm) Firm Interfacing	N/A	N/A	N/A	N/A	N/A	Make sure interfacing does not peel off
4	On bodice webbing channels, punch a hole insert an eyelet 5cm from both edges	N/A	150cm Webbing (x3)	Pastel Pink Webbing (3cm)	N/A	N/A	N/A	N/A	N/A	Make sure that the hole is central to allow for the channels to be stitched either side of the eyelet later on
5	On sleeve webbing channels, punch a hole insert an eyelet 5cm from one edge	N/A	70cm Webbing (x2 pieces)	Pastel Pink Webbing (3cm)	N/A	N/A	N/A	N/A	N/A	Make sure that the hole is central to allow for the channels to be stitched either side of the eyelet later on
6	On Collar webbing channels, punch a hole insert an eyelet 5cm from both edges	N/A	65m Webbing (x1)	Pastel Pink Webbing (3cm)	N/A	N/A	N/A	N/A	N/A	Make sure that the hole is central to allow for the channels to be stitched either side of the eyelet later on
7	Interface pockets and belt loops lining (Interface shiny side. to wrong side of lining)	N/A	CF pocket (x4) CF pocket flap (x6) Roll up pocket base piece (x3) Small mask pockets (x6) Small mask pocket flaps (x6) Small elasticated pocket (x2 pieces) Belt loops (x2 pieces)4	Pastel Blue Polyester Satin Firm Interfacing	N/A	N/A	N/A	N/A	N/A	Lining the same fabric as the main fabric and is cut on the same lay plan  The amount of panels in the pieces column include the lining, main piece and interfacing
8	Overlock all pattern pieces	O/L e8117	All Pieces	All	120 green  (Pantone :13-011 7 TPG)	N/A	N/A	15	80	Accurately

**Designer** Tayler Spring  
**Season** A/W 2021  
**Garment** Adjustable Oversized Puffer Coat

**Collection** 'House of Colour'  
**Size Range** 8-10 | 12-14 | 16-18  
**Garment Style Number** TS -020 - 2021

**Page Name** Garment Breakdown  
**Issue Date** 01.12.2020  
**Last Updated** 08.12.2020



Operation number	Operation	Machine	Pieces used during operation	Fabric and Materials	Thread	Seam Width	Trim Off	Stitch per CM	Needle size	Comments
9	For each belt loops, sew one piece with interfacing together with one piece without (right side to right side) Repeat this process for all 12 belt loops	L/S 301	Belt loops (x2 pieces)4	Pastel Blue Polyester Satin	120 blue  (Pantone :14-481 6 TPG)	1cm	Yes - as close to edge as possible	14	70	Do not sew along the edges of the width of the pieces as they are to be bagged out in the next stage
10	Bag out belt loops	N/A	Belt loops (x1 piece)	Pastel Blue Polyester Satin	N/A	N/A	N/A	N/A	N/A	Make sure the corners have been snipped off to get a perfect rectangle shape when bagged out
11	Top stitch down both sides of the length of the belt loops	L/S 301	Belt loops (x1 piece)	Pastel Blue Polyester Satin	120 blue  (Pantone :14-481 6 TPG)	N/A	N/A	14	70	Nicely to create a clean finish
12	On the CF panel, top stitch the first belt loop 60cm up from hem, and 5cm away from CF edge. Repeat for both centre front panels.	L/S 301	Belt loops (x2 pieces)	Pastel Blue Polyester Satin	120 blue  (Pantone :14-481 6 TPG)	N/A	N/A	14	70	Only sew the width of the belt loops, leaving the lengths free to allow for the belts to be channeled through at a later stage.
13	On the side panel, top stitch the first belt loop 60cm up from hem, and 5cm away from right seam edge. Repeat for both side panels	L/S 301	Belt loops (x2 pieces)	Pastel Blue Polyester Satin	120 blue  (Pantone :14-481 6 TPG)	N/A	N/A	14	70	Only sew the width of the belt loops, leaving the lengths free to allow for the belts to be channeled through at a later stage.
14	On the CB panel, top stitch the first belt loop 60cm up from hem, and 7cm away from seam edge. Repeat for both sides of CB panel.	L/S 301	Belt loops (x2 pieces)	Pastel Blue Polyester Satin	120 blue  (Pantone :14-481 6 TPG)	N/A	N/A	14	70	Only sew the width of the belt loops, leaving the lengths free to allow for the belts to be channeled through at a later stage.
15	Repeat this process for the second row of belt loops, but this time the measurements will be taken 55cm from hem instead of 60cm - leaving a 5cm gap between the two rows.	L/S 301	Belt loops (x6)	Pastel Blue Polyester Satin	120 blue  (Pantone :14-481 6 TPG)	N/A	N/A	14	70	Only sew the width of the belt loops, leaving the lengths free to allow for the belts to be channeled through at a later stage.

**Designer** Tayler Spring  
**Season** A/W 2021  
**Garment** Adjustable Oversized Puffer Coat

**Collection** 'House of Colour'  
**Size Range** 8-10 | 12-14 | 16-18  
**Garment Style Number** TS -020 - 2021

**Page Name** Garment Breakdown  
**Issue Date** 01.12.2020  
**Last Updated** 08.12.2020



Operation number	Operation	Machine	Pieces used during operation	Fabric and Materials	Thread 	Seam Width	Trim Off	Stitch per CM	Needle size	Comments
16	For the main pocket, place one pocket piece that has been smocked, right side to right side on top of a non-smocked pocket piece for the lining. Sew around edges leaving the top of pocket open.	L/S 301	CF Pocket (x2 pieces)	Pastel Blue Polyester Satin	120 blue  (Pantone :14-481 6 TPG)	1cm	No	14	70	Avoid catching the smocking as this may pull and distort the finish of it
17	Bag pocket out through open seam, fold open seam 1cm inwards and press shut. Top stitch the seam shut.	L/S 301	CF Pocket (x1 piece)	Pastel Blue Polyester Satin	120 blue  (Pantone :14-481 6 TPG)	N/A	N/A	14	70	Make sure the top stitching starts and finishes 0.5cm away from both edges as the pocket top stitching will continue when stitched onto panel
18	Sew 3 buttons onto pocket. This will be 3cm from side and 12cm up from bottom of pocket. Leave 3cm between each button	N/A	Pocket Buttons	N/A	120 blue  (Pantone :14-481 6 TPG)	N/A	N/A	N/A	N/A	Make sure the buttons are accurately placed before sewing. Measure out beforehand
19	Top stitch pocket onto CF panel, 25cm from hem and 5cm away from CF opening. Stitch around edges leaving top of the pocket free create an open pocket.	L/S 301	CF Pocket (x1 piece)	Pastel Blue Polyester Satin	120 blue  (Pantone :14-481 6 TPG)	N/A	N/A	14	70	Top stitch needs to be neat and clean
20	Repeat for other pocket	N/A	N/A	N/A	N/A	N/A	N/A	N/A	N/A	N/A
21	For CF pocket flaps, place a piece that has been interfaced, right side together with one that has not. Sew around the edges leaving the straight top line open	L/S 301	Pocket Flap (x2 pieces)	Pastel Blue Polyester Satin	120 blue  (Pantone :14-481 6 TPG)	1cm	No			For CF pocket flaps, place a piece that has been interfaced, right side together with one that has not. Sew around the edges leaving the straight top line open
22	Bag out pocket flap and snip edges to allow for the corners to be prominent.	N/A	Pocket Flap (x1 piece)	Pastel Blue Polyester Satin	120 blue  (Pantone :14-481 6 TPG)	N/A	0.5cm			Bag out pocket flap and snip edges to allow for the corners to be prominent.

**Designer** Taylor Spring  
**Season** A/W 2021  
**Garment** Adjustable Oversized Puffer Coat

**Collection** 'House of Colour'  
**Size Range** 8-10 | 12-14 | 16-18  
**Garment Style Number** TS -020 - 2021

**Page Name** Garment Breakdown  
**Issue Date** 01.12.2020  
**Last Updated** 08.12.2020




Operation number	Operation	Machine	Pieces used during operation	Fabric and Materials	Thread	Seam Width	Trim Off	Stitch per CM	Needle size	Comments
23	Overlock the straight edge raw edge of pocket flap	O/L e8117	Pocket Flap (x1 piece)	Pastel Blue Polyester Satin	120 blue  (Pantone :14-481 6 TPG)	N/A	N/A	15	80	Overlock the straight edge raw edge of pocket flap
24	Top stitch 0.5cm around pocket flap edges	L/S 301	Pocket Flap (x1 piece)	Pastel Blue Polyester Satin	120 blue  (Pantone :14-481 6 TPG)	N/A	N/A	14	70	Top stitch 0.5cm around pocket flap edges
25	Create 3 button holes on the centre of pocket flap. This will be 3cm from edge and 3cm between each button hole	N/A	Pocket Flap (x1 piece)	Pastel Blue Polyester Satin	120 blue  (Pantone :14-481 6 TPG)	N/A	N/A	N/A	N/A	Use button hole machine for this to create a neat finish
26	Top stitch overlocked edge of pocket flap 2cm above pocket, and fold over pocket flap to conceal this finish.	O/L e8117	Pocket Flap (x1 piece)	Pastel Blue Polyester Satin	120 blue  (Pantone :14-481 6 TPG)	N/A	N/A	15	80	Press fold
27	For roll out pocket, place two base pieces right side to right side (one interfaced piece and one not). Sew together along the length of the piece on both sides, leaving both length open to bag out	L/S 301	Roll out Pocket: Base Piece (x2 pieces)	Pastel Blue Polyester Satin	120 blue  (Pantone :14-481 6 TPG)	1cm	0.5cm	14	70	Sew accurately
28	Bag out piece and top stitch the length edges, 0.5cm from edge.	L/S 301	Roll out Pocket: Base Piece (x1 piece)	Pastel Blue Polyester Satin		N/A	N/A	14	70	Trim edges
29	Fold the open edges in by 1cm and press. Then sandwich both ends the wax cord 1cm in the seam and top stitch over the seam. Repeat for both widths of the fabric	L/S 301	Roll out Pocket: Base Piece (x1 piece)	Pastel Blue Polyester Satin  15cm wax cord	120 blue  (Pantone :14-481 6 TPG)	N/A	N/A	14	70	Make sure the wax cord is secure as if it comes out later on it will be difficult to re-attach

**Designer** Tayler Spring  
**Season** A/W 2021  
**Garment** Adjustable Oversized Puffer Coat

**Collection** 'House of Colour'  
**Size Range** 8-10 | 12-14 | 16-18  
**Garment Style Number** TS -020 - 2021

**Page Name** Garment Breakdown  
**Issue Date** 01.12.2020  
**Last Updated** 08.12.2020



Operation number	Operation	Machine	Pieces used during operation	Fabric and Materials	Thread 	Seam Width	Trim Off	Stitch per CM	Needle size	Comments
30	For the mask pockets place one pocket piece that has been interfaced, right side to right side on top of a non-interfaced pocket piece for the lining. Sew around edges leaving the top of pocket open.	L/S 301	Roll out Pocket: Mask Pocket (x2 pieces)	Pastel Blue Polyester Satin	120 blue  (Pantone :14-481 6 TPG)	1cm	0,5cm	14	70	Trim edges
31	Bag pocket out through open seam, fold open seam 1cm inwards and press shut. Top stitch the seam shut.	L/S 301	Roll out Pocket: Mask Pocket (x1 piece)	Pastel Blue Polyester Satin	120 blue  (Pantone :14-481 6 TPG)	N/A	0.5cm	14	70	Trim any corners before bagging out
32	Top stitch pocket onto base piece, 1cm from width edge and 1cm away from bottom of piece. Stitch around edges leaving top of the pocket free create an open pocket.	L/S 301	Roll out Pocket: Mask Pocket (x1 piece)	Pastel Blue Polyester Satin	120 blue  (Pantone :14-481 6 TPG)	N/A		14	70	Make sure top stitching is neat and accurate
33	Repeat for other pocket, and place it 1cm next to the first mask pocket	N/A	N/A	N/A	N/A	N/A	N/A	N/A	N/A	Make sure the pockets are in line on the base piece
34	For roll out pocket flaps, place a piece that has been interfaced, right side together with one that has not. Sew around the edges leaving the straight top line open	L/S 301	Roll out Pocket: Mask Pocket Flaps (x2 pieces)	Pastel Blue Polyester Satin	120 blue  (Pantone :14-481 6 TPG)	1cm	0.5cm	14	70	Trim before bagging
35	Bag out pocket flap		Roll out Pocket: Mask Pocket Flaps (x1 piece)	Pastel Blue Polyester Satin	120 blue  (Pantone :14-481 6 TPG)	N/A	0.5cm	N/A	N/A	Ship edges to allow for the corners to be prominent.
36	Overlock the straight edge raw edge of pocket flap	O/L e8117	Roll out Pocket: Mask Pocket Flaps (x1 piece)	Pastel Blue Polyester Satin	120 blue  (Pantone :14-481 6 TPG)	N/A	N/A	15	80	Make sure this is neat as this will be visible



**Designer** Tayler Spring  
**Season** A/W 2021  
**Garment** Adjustable Oversized Puffer Coat

**Collection** 'House of Colour'  
**Size Range** 8-10 | 12-14 | 16-18  
**Garment Style Number** TS -020 - 2021

**Page Name** Garment Breakdown  
**Issue Date** 01.12.2020  
**Last Updated** 08.12.2020




Operation number	Operation	Machine	Pieces used during operation	Fabric and Materials	Thread	Seam Width	Trim Off	Stitch per CM	Needle size	Comments
37	Top stitch 0.5cm around pocket flap edges	L/S 301	Roll out Pocket: Mask Pocket Flaps (x1 piece)	Pastel Blue Polyester Satin	120 blue  (Pantone :14-481 6 TPG)	N/A	N/A	14	70	Make sure top stitching is neat and accurate
38	Top stitch overlocked edge of pocket flap 1cm above pocket, and fold over pocket flap to conceal this finish.	L/S 301	Roll out Pocket: Mask Pocket Flaps (x1 piece)	Pastel Blue Polyester Satin	120 blue  (Pantone :14-481 6 TPG)	N/A	N/A	14	70	Make sure top stitching is neat and accurate, then press fold on flap so it is functional as a pocket flap
39	For elasticated pocket, place two pieces right side to right side, and sew around edges, leaving the top open to bag out.	L/S 301	Roll out Pocket: Hand Sanitiser Pocket (x2 pieces pieces)	Pastel Blue Polyester Satin	120 blue  (Pantone :14-481 6 TPG)	1cm	N/A	14	70	Make sure after this t that the edges are trimmed, prepared to be bagged out
40	Bag out pocket then overlock the raw edge top.	O/L e8117	Roll out Pocket: Hand Sanitiser Pocket (x1 piece)	Pastel Blue Polyester Satin	120 blue  (Pantone :14-481 6 TPG)	N/A	0.5cm	15	80	Make sure overlooking is neat
41	Fold top of the pocket inwards by 1cm and feed elastic through. Sew elastic at one end, stretch pocket as far as it will go and sew elastic in place at the other end	L/S 301	Roll out Pocket: Hand Sanitiser Pocket (x1 piece)	Pastel Blue Polyester Satin  1mm elastic	120 blue  (Pantone :14-481 6 TPG)	N/A	N/A	14	70	The further and more stretched out the pocket is when sewing the elastic in, the tighter the hold of the elastic will be.
42	Top stitch pocket onto base piece, 1cm next to mask pocket.	L/S 301	Roll out Pocket: Hand Sanitiser Pocket (x1 piece)	Pastel Blue Polyester Satin	120 blue  (Pantone :14-481 6 TPG)	N/A	N/A	14	70	Stretch pocket out when sewing it to allow for the elastic pocket to hold hand sanitiser when finalised.
43	Left CF panel and left side panel seams together (right side to right side) and sew together - sew from hem to beginning of armhole	L/S 301	CF panel (x1 piece) Side panel (x1 piece)	Pastel Green Polyester Satin - quilted and wadded	120 green  (Pantone :13-011 7 TPG)	1cm	No	14	70	When pinning the pieces right side to right side, make sure the quilting lines match up to avoid distorting the pattern

**Designer** Tayler Spring  
**Season** A/W 2021  
**Garment** Adjustable Oversized Puffer Coat

**Collection** 'House of Colour'  
**Size Range** 8-10 | 12-14 | 16-18  
**Garment Style Number** TS -020 - 2021

**Page Name** Garment Breakdown  
**Issue Date** 01.12.2020  
**Last Updated** 08.12.2020



Operation number	Operation	Machine	Pieces used during operation	Fabric and Materials	Thread 	Seam Width	Trim Off	Stitch per CM	Needle size	Comments
44	Right CF panel and right side panel seams together (right side to right side) and sew together - sew from hem to beginning of armhole	L/S 301	CF panel (x1 piece) Side panel (x1 piece)	Pastel Green Polyester Satin - quilted and wadded	120 green  (Pantone :13-011 7 TPG)	1cm	No	14	70	Make sure this is near and accurate
45	Left side panel seam to right CB seam (right side to right side) and sew together	L/S 301	Side Panel (x1 piece) CB Panel (x1 piece)	Pastel Green Polyester Satin - quilted and wadded	120 green  (Pantone :13-011 7 TPG)	1cm	No	14	70	Make sure this is near and accurate
46	Right side panel seam to left CB seam (right side to right side) and sew together	L/S 301	Side Panel (x1 piece) CB Panel (x1 piece)	Pastel Green Polyester Satin - quilted and wadded	120 green  (Pantone :13-011 7 TPG)	1cm	No	14	70	Make sure this is near and accurate
47	Left CF shoulder seam to be sewn to right CB shoulder seam (right side to right side)	L/S 301	CF Panel (x1 piece) CB Panel (x1 piece)	Pastel Green Polyester Satin - quilted and wadded	120 green  (Pantone :13-011 7 TPG)	1cm	No	14	70	Make sure this is near and accurate
48	Right CF shoulder seam to be sewn to left CB shoulder seam (right side to right side)	L/S 301	CF Panel (x1 piece) CB Panel (x1 piece)	Pastel Green Polyester Satin - quilted and wadded	120 green  (Pantone :13-011 7 TPG)	1cm	No	14	70	Make sure this is near and accurate
49	Sew webbing onto the centre of the sleeve panel - aligning it edge to edge. Sew down one side first, then place wax cord in (making sure it goes under the webbing and out of the eyelet). Then sew down the other side of the channel, catching the wax cord at the top of the sleeve head but making sure it is free within the rest of the channel. Repeat for both sleeve panels	L/S 301	Sleeve Panel (x1 piece)	Pastel Pink Webbing (80cm in length) - (x2 pieces)  100cm Wax Cord  Pastel Green Polyester Satin - quilted and wadded	120 Pink  (Pantone :13-151 3 TCX)	N/A	No	12	70	Make sure that cord is caught otherwise it will come out when pulled to ruche

**Designer** Tayler Spring

**Season** A/W 2021

**Garment** Adjustable Oversized Puffer Coat

**Collection** 'House of Colour'

**Size Range** 8-10 | 12-14 | 16-18

**Garment Style Number** TS -020 - 2021

**Page Name** Garment Breakdown

**Issue Date** 01.12.2020

**Last Updated** 08.12.2020


Operation number	Operation	Machine	Pieces used during operation	Fabric and Materials	Thread	Seam Width	Trim Off	Stitch per CM	Needle size	Comments
50	Fold sleeve in half and sew edges together (right side to right side). Then Sew sleeve pieces into armhole	L/S 301	Sleeve Panel (x2 pieces) CF Panel (x2 pieces) CB Panel (x2 pieces) Side Panel (x2 pieces)	Pastel Green Polyester Satin - quilted and wadded	120 green  (Pantone :13-011 7 TPG)	1cm	No	14	70	Accurately
51	Sew webbing around the top of the collar piece - aligning it edge to edge. Sew down one side first, then place wax cord in (making sure it goes under the webbing and out of the eyelet). Then sew down the other side of the channel, making sure it is free within the rest of the channel.	L/S 301	Collar Panel (x1 piece)	Pastel Pink Webbing (80cm in length) - (x2 pieces)  100cm Wax Cord  Pastel yellow Polyester Satin - quilted and wadded	120 yellow  (Pantone :11-061 7 TCX)	N/A	No	12	70	Make sure that a 1cm allowance is left above webbing to fold over when bagged out
52	Place collar panel right side to right side around neck line and sew	L/S 301	Collar Panel (x1 piece) CF Panel (x2 pieces) CB Panel (x2 pieces) Side Panel (x2 pieces)	Pastel Yellow Polyester Satin - quilted and wadded	120 yellow  (Pantone :11-061 7 TCX)	1cm	Yes (0.5cm)	14	70	Snip off edges of collar so when it is bagged out there is not excess fabric causing the corners to not be as structured
53	Press all seams of garment open	Steamer	Entire Garment	N/A	N/A	N/A	N/A	N/A	N/A	Make sure seams are pressed flat to avoid bulk within the garment
54	Sew one length of first webbing channel around garment. The channel will go from edge of left CF panel to edge of right CF panel, around the entire garment. The channel is 70cm from hem	L/S 301	CF Panel (x2 pieces) CB Panel (x2 pieces) Side Panel (x2 pieces)	Pastel Pink Webbing (80cm in length) - (x2 pieces)  Pastel green Polyester Satin - quilted and wadded	120 Pink  (Pantone :13-151 3 TCX)	N/A	N/A	12	70	Keep the channel 70cm from hem at all times to make sure it is in a consistent straight line

**Designer** Tayler Spring  
**Season** A/W 2021  
**Garment** Adjustable Oversized Puffer Coat

**Collection** 'House of Colour'  
**Size Range** 8-10 | 12-14 | 16-18  
**Garment Style Number** TS -020 - 2021

**Page Name** Garment Breakdown  
**Issue Date** 01.12.2020  
**Last Updated** 08.12.2020




Operation number	Operation	Machine	Pieces used during operation	Fabric and Materials	Thread 	Seam Width	Trim Off	Stitch per CM	Needle size	Comments
55	Sew other length of first webbing channel around garment. Make sure that the wax cord is under the channel and has is coming out of both eyelets at either end.	L/S 301	CF Panel (x2 pieces) CB Panel (x2 pieces) Side Panel (x2 pieces)	Pastel Pink Webbing (80cm in length) - (x2 pieces)  150cm Wax Cord  Pastel green Polyester Satin - quilted and wadded	120 Pink  (Pantone :13-151 3 TCX)	N/A	N/A	12	70	Do not catch the cord when sewing the channel shut as the adjustable function will not succeed.
56	Sew one length of second webbing channel around garment. The channel will go from edge of left CF panel to edge of right CF panel, around the entire garment. The channel is 45cm from hem	L/S 301	CF Panel (x2 pieces) CB Panel (x2 pieces) Side Panel (x2 pieces)	Pastel Pink Webbing (80cm in length) - (x2 pieces)  Pastel green Polyester Satin - quilted and wadded				12	70	Make sure that the stitching does not come too close to eyelet
57	Sew other length of second webbing channel around garment. Make sure that the wax cord is under the channel and has is coming out of both eyelets at either end.	L/S 301	CF Panel (x2 pieces) CB Panel (x2 pieces) Side Panel (x2 pieces)	Pastel Pink Webbing (80cm in length) - (x2 pieces)  100cm Wax Cord  Pastel green Polyester Satin - quilted and wadded	120 Pink  (Pantone :13-151 3 TCX)	N/A	N/A	12	70	Do not catch the cord when sewing the channel shut as the adjustable function will not succeed.
58	Sew one length of third webbing channel around garment. The channel will go from edge of left CF panel to edge of right CF panel, around the entire garment. The channel is 20cm from hem	L/S 301	CF Panel (x2 pieces) CB Panel (x2 pieces) Side Panel (x2 pieces)	Pastel Pink Webbing (80cm in length) - (x2 pieces)  Pastel green Polyester Satin - quilted and wadded	120 Pink  (Pantone :13-151 3 TCX)	N/A	N/A	12	70	Make sure that the stitching does not come too close to eyelet

**Designer** Taylor Spring  
**Season** A/W 2021  
**Garment** Adjustable Oversized Puffer Coat

**Collection** 'House of Colour'  
**Size Range** 8-10 | 12-14 | 16-18  
**Garment Style Number** TS -020 - 2021


**Page Name** Garment Breakdown  
**Issue Date** 01.12.2020  
**Last Updated** 08.12.2020

Operation number	Operation	Machine	Pieces used during operation	Fabric and Materials	Thread 	Seam Width	Trim Off	Stitch per CM	Needle size	Comments
59	Sew other length of third webbing channel around garment. Make sure that the wax cord is under the channel and has is coming out of both eyelets at either end.	L/S 301	CF Panel (x2 pieces) CB Panel (x2 pieces) Side Panel (x2 pieces)	Pastel Pink Webbing (80cm in length) - (x2 pieces)  100cm Wax Cord  Pastel green Polyester Satin - quilted and wadded	120 Pink  (Pantone :13-151 3 TCX)	N/A	N/A	12	70	Do not catch wax cord
60	Sew open-ended zip right side to right side on CF edge, repeat for other side	L/S 301	CF panel (x2 pieces)	Pastel Green Polyester Satin - quilted and wadded  2 way open-ended zip	120 Pink  (Pantone :13-151 3 TCX)	N/A	N/A	14	70	Leave at least 0.5cm between teeth and edge of zip
61	For lining, CF panels are split into two. To sew these two panels together, place one pocket piece right side to right side on the top of the bottom CF piece, and place the other pocket right side to right side on the bottom of the top CF piece. Top stitch pockets on,	L/S 301	Top CF Panel Bottom CF Panel Lining Pockets	Pastel Pink Polyester Satin	120 Pink  (Pantone :13-151 3 TCX)	1cm	No	14	70	Carefully top stitch
62	Place bottom and top pieces of CF right side to right side with pocket flaps coming out of the seam. Sew seam shut, but go around the pocket bag allowing the seam to close and the pocket to function properly	L/S 301	Top CF Panel Bottom CF Panel Lining Pockets	Pastel Pink Polyester Satin	120 Pink  (Pantone :13-151 3 TCX)	1cm	No	14	70	Do not catch pocket opening when sewing seam shut
63	Repeat for other CF lining panel	N/A	N/A	N/A	N/A	N/A	N/A	N/A	N/A	
64	Sew left side panel seam to right CB seam (right side to right side) and sew together	L/S 301	Side Panel (x1 piece) CB Panel (x1 piece)	Pastel Pink Silk Haborai	120 Pink  (Pantone :13-151 3 TCX)	1cm	No	14	70	Left side panel seam to right CB seam (right side to right side) and sew together

**Designer** Tayler Spring  
**Season** A/W 2021  
**Garment** Adjustable Oversized Puffer Coat

**Collection** 'House of Colour'  
**Size Range** 8-10 | 12-14 | 16-18  
**Garment Style Number** TS -020 - 2021

**Page Name** Garment Breakdown  
**Issue Date** 01.12.2020  
**Last Updated** 08.12.2020


Operation number	Operation	Machine	Pieces used during operation	Fabric and Materials	Thread 	Seam Width	Trim Off	Stitch per CM	Needle size	Comments
65	Right side lining panel seam to left CB seam (right side to right side) and sew together	L/S 301	Side Panel (x1 piece) CB Panel (x1 piece)	Pastel Pink Silk Habotai	120 Pink  (Pantone :13-151 3 TCX)	1cm	No	14	70	Right side panel seam to left CB seam (right side to right side) and sew together
66	Left CF lining shoulder seam to be sewn to right CB shoulder seam (right side to right side)	L/S 301	Side Panel (x1 piece) CB Panel (x1 piece)	Pastel Pink Silk Habotai	120 Pink  (Pantone :13-151 3 TCX)	1cm	No	14	70	Left CF shoulder seam to be sewn to right CB shoulder seam (right side to right side)
67	Right CF lining shoulder seam to be sewn to left CB shoulder seam (right side to right side)	L/S 301	Side Panel (x1 piece) CB Panel (x1 piece)	Pastel Pink Silk Habotai	120 Pink  (Pantone :13-151 3 TCX)	1cm	No	14	70	Right CF shoulder seam to be sewn to left CB shoulder seam (right side to right side)
68	Fold sleeve lining in half and sew edges together (right side to right side). Then Sew sleeve pieces into armhole	L/S 301	Sleeve Panel (x2 pieces) CF Panel (x2 pieces) CB Panel (x2 pieces) Side Panel (x2 pieces)	Pastel Pink Silk Habotai	120 Pink  (Pantone :13-151 3 TCX)	1cm	No	14	70	Match notches and seams up when sewing sleeve head in
69	Place collar lining panel right side to right side around neck line and sew	L/S 301	Collar Panel (x1 piece) CF Panel (x2 pieces) CB Panel (x2 pieces) Side Panel (x2 pieces)	Pastel Pink Silk Habotai	120 Pink  (Pantone :13-151 3 TCX)	1cm	(0.5cm)	14	70	Snip off edges of collar so when it is bagged out there is not excess fabric causing the corners to not be as structured
70	Press all seams of garment open	Steamer	Entire Lining	Pastel Pink Silk Habotai	N/A	N/A	N/A	N/A	N/A	Make sure seams are pressed flat to avoid bulk within the garment
71	Place lining top of garment and make sure every panel is right side to right side, pulling main sleeves through lining sleeves.	N/A	Entire garment and lining	Pastel Pink Silk Habotai  Pastel green Polyester Satin - quilted and wadded	120 Pink  (Pantone :13-151 3 TCX)	1cm	No	14	70	Make sure that there is not excess movement as this will distort and pull the garment when lining is sewn in
72	Sew up left CF panel, around collar and back down the right CF panel.	L/S 301	Entire garment and lining	Pastel Pink Silk Habotai  Pastel green Polyester Satin - quilted and wadded	120 Pink  (Pantone :13-151 3 TCX)	1cm	No	14	70	Do not catch zip teeth, use a zip foot when tacking this part of the garment

**Designer** Taylor Spring  
**Season** A/W 2021  
**Garment** Adjustable Oversized Puffer Coat

**Collection** 'House of Colour'  
**Size Range** 8-10 | 12-14 | 16-18  
**Garment Style Number** TS -020 - 2021

**Page Name** Garment Breakdown  
**Issue Date** 01.12.2020  
**Last Updated** 08.12.2020



Operation number	Operation	Machine	Pieces used during operation	Fabric and Materials	Thread 	Seam Width	Trim Off	Stitch per CM	Needle size	Comments
73	Overlock lining sleeve edges together with main sleeve edges.	O/L e8117	Entire garment and lining	Pastel Pink Silk Habotai  Pastel green Polyester Satin - quilted and wadded	120 Pink  (Pantone :13-151 3 TCX)	1cm	No	15	80	Make sure the edges match up
74	Fold hem and lining in by 2cm, press and top stitch	L/S 301	Entire garment and lining	Pastel Pink Silk Habotai  Pastel green Polyester Satin - quilted and wadded	120 Pink  (Pantone :13-151 3 TCX)	N/A	N/A	14	70	Press before stitching
75	Fold cuff piece in half, then sew the width of the elastic in the fold of the cuff panel	L/S 301	Cuff Panel (X1 piece)	50mm elastic Pastel Blue Polyester Satin	120 blue  (Pantone :14-481 6 TPG)	1cm	No	14	70	The more stretched the piece, the more it will tighten on the user's wrist
76	Stretch the elastic out and sew it in the other end of the folded cuff piece, making sure the piece is fully stretched	L/S 301	Cuff Panel (X1 piece)	50mm elastic Pastel Blue Polyester Satin	120 blue  (Pantone :14-481 6 TPG)	1cm	No	14	70	make sure the piece is fully stretch to make sure it can retain a tight elasticated finish
77	Overlock cuff edge	Entire garment and lining	Cuff Panel (X1 piece)	50mm elastic Pastel Blue Polyester Satin	120 blue  (Pantone :14-481 6 TPG)	1cm	No	15	80	Make sure this is neat as this will be visible
78	Place cuff edge on sleeve edge right side to right side and sew together	L/S 301	Cuff Panel (x1 piece) Sleeve Panel (x1 piece)	50mm elastic Pastel Blue Polyester Satin	120 blue  (Pantone :14-481 6 TPG)	1cm	No	14	70	Make sure they are accurately positioned

**Designer** Tayler Spring  
**Season** A/W 2021  
**Garment** Adjustable Oversized Puffer Coat

**Collection** 'House of Colour'  
**Size Range** 8-10 | 12-14 | 16-18  
**Garment Style Number** TS -020 - 2021

**Page Name** Garment Breakdown  
**Issue Date** 01.12.2020  
**Last Updated** 08.12.2020



Operation number	Operation	Machine	Pieces used during operation	Fabric and Materials	Thread	Seam Width	Trim Off	Stitch per CM	Needle size	Comments
79	Repeat for other cuff	L/S 301	Cuff Panel (x1 piece) Sleeve Panel (x1 piece)	50mm elastic Pastel Blue Polyester Satin	120 blue  (Pantone :14-481 6 TPG)	1cm	No	14	70	Make sure they are accurately positioned
80	Feed webbing through belt loops. After attaching adjustable side of buckle, fold edge of webbing over by 1cm and 1cm again and top stitch to hold in place	L/S 301	N/A	5cm Pastel Yellow Webbing	120 yellow  (Pantone :11-061 7 TCX)	N/A	N/A	12	70	Make sure webbing has not folded over when being placed in
81	When attaching non-adjustable side of buckle, feed webbing through, pull back by 3cm and top stitch together to secure	L/S 301	N/A	5cm Pastel Yellow Webbing	120 yellow  (Pantone :11-061 7 TCX)	N/A	N/A	12	70	Make sure fold is near and then top stitch
82	Repeat these stages for other belt	L/S 301	N/A	5cm Pastel Yellow Webbing	120 yellow  (Pantone :11-061 7 TCX)	N/A	N/A	12	70	N/A
83	Press entire garment for a nice, neat finish	Steamer	Entire Garment	N/A	N/A	N/A	N/A	N/A	N/A	N/A



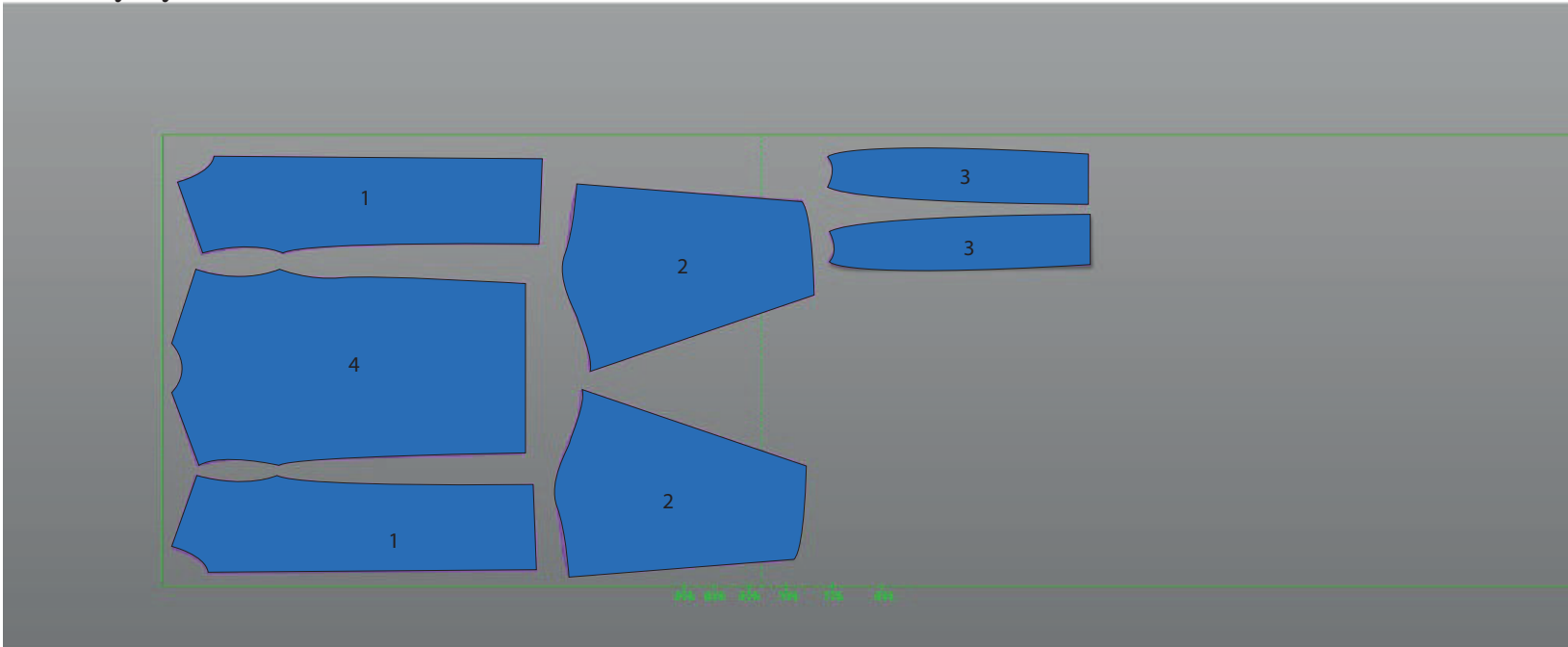
**Designer** Taylor Spring  
**Season** AW 2021  
**Garment** Adjustable Oversized Puffer Coat

**Collection** Taylor Spring  
**Size Range** 8-10 | 12-14 | 16-18  
**Garment Style Number** TS -020 - 2021

**Page Name** Lay Plan  
**Issue Date** 01.12.2020  
**Last Updated** 08.12.2020



### Main Body Lay Plan



### Main Body Lay Plan Pieces

- 1: Centre Front Panels
- 2: Sleeve Panels
- 3: Side Panels
- 4: Centre Back Panel

### Main Body Fabric (Two Layers)

Polyester Satin - 100% Polyester  
8oz Polyester Wadding

Marker name: MAIN LAY PLAN-150  
Utilization: 0.00%

Length: 2m 50.7cm  
Model/Size/Qty : MAIN LAY PLAN 12/1

Width: 150.01cm  
Unplaced/Placed: 7/0

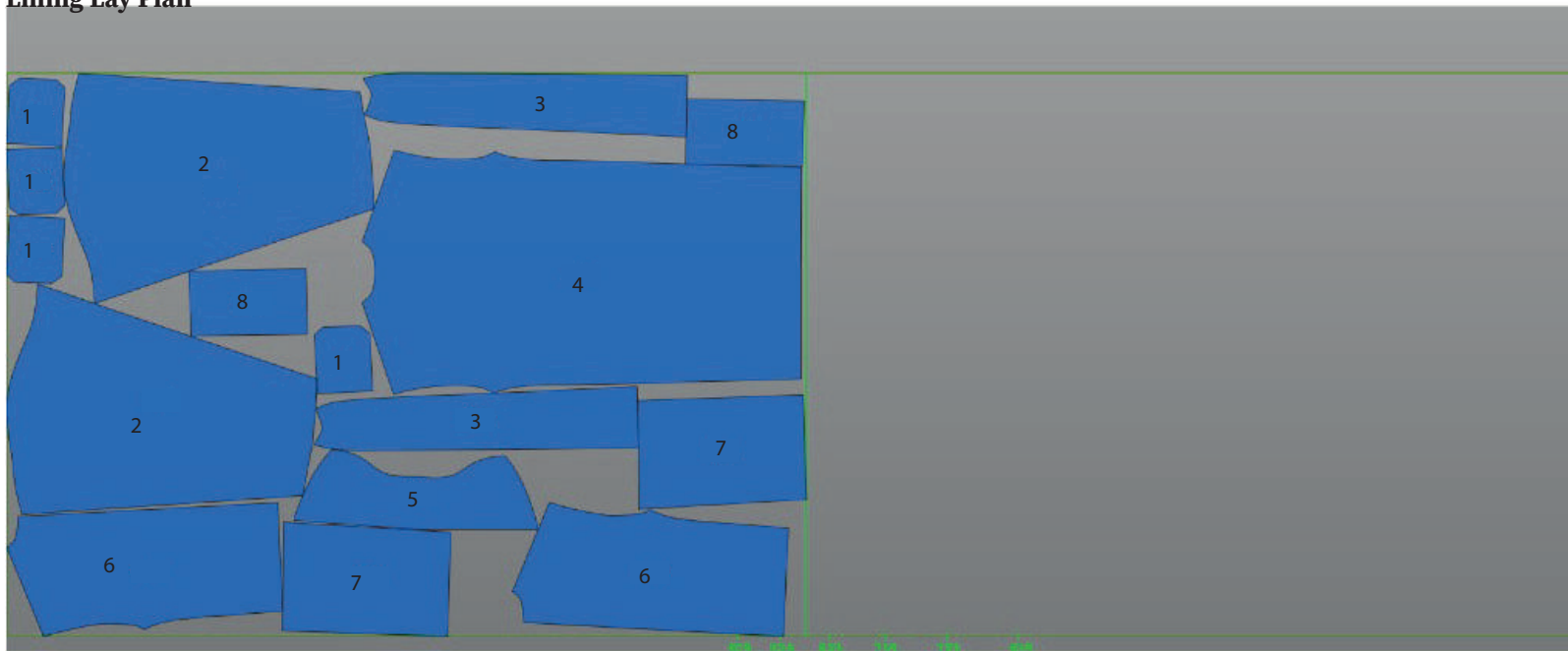
**Designer** Taylor Spring  
**Season** A/W 2021  
**Garment** Adjustable Oversized Puffer Coat

**Collection** Taylor Spring  
**Size Range** 8-10 | 12-14 | 16-18  
**Garment Style Number** TS -020 - 2021

**Page Name** Critical Path  
**Issue Date** 01.12.2020  
**Last Updated** 08.12.2020



### Lining Lay Plan



### Lining Lay Plan Pieces

- 1: Inside Pocket
- 2: Sleeve Lining
- 3: Side Panel Lining
- 4: Centre Back Lining
- 5: Collar Lining
- 6: Centre Front - Top Half Lining
- 7: Centre Front - Bottom Half Lining
- 8: Cuff Lining

### Lining Lay Plan Fabric

Silk Habotai

Marker name: LINING LAY PLAN-150  
Utilization: 82.31%

Length: 2m 16.53cm  
Model/Size/Qty : LINING LAY PLAN 12/1

Width: 150.01cm  
Unplaced/Placed: 0/16

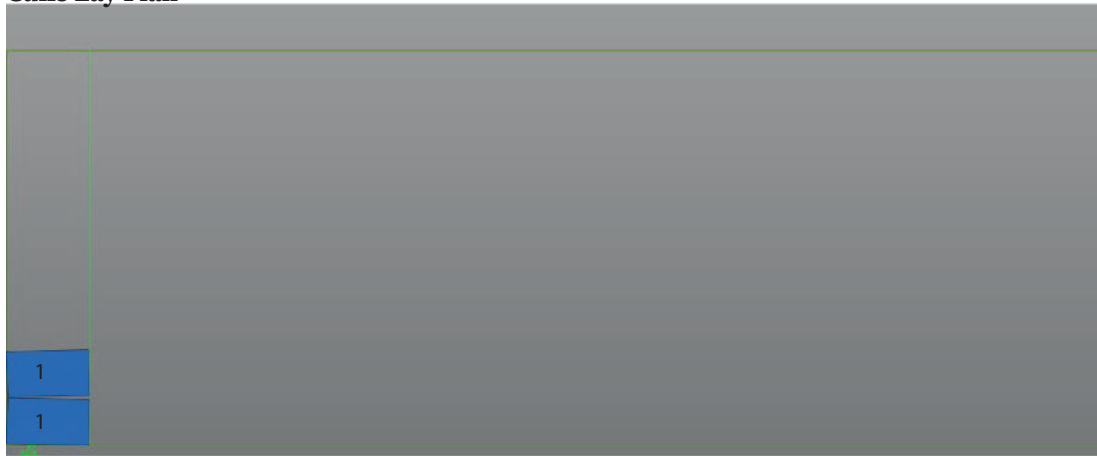
**Designer** Taylor Spring  
**Season** A/W 2021  
**Garment** Adjustable Oversized Puffer Coat

**Collection** Taylor Spring  
**Size Range** 8-10 | 12-14 | 16-18  
**Garment Style Number** TS -020 - 2021

**Page Name** Critical Path  
**Issue Date** 01.12.2020  
**Last Updated** 08.12.2020



### Cuffs Lay Plan



### Cuff Lay Plan Pieces

1: Cuff Lining

### Cuff Lay Plan Fabric

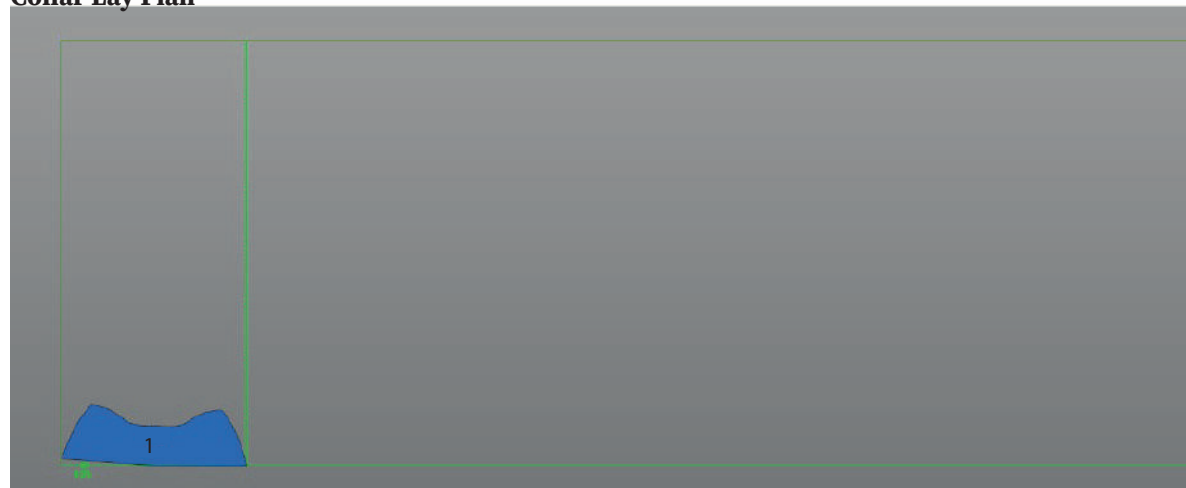
Polyester Satin - 100% Polyester

Marker name: CUFFS-150  
Utilization: 22.72%

Length: 0m 32.13cm  
Mode/Size/Qty : CUFFS 12/1

Width: 150.01cm  
Unplaced/Placed: 0/2

### Collar Lay Plan



### Collar Lay Plan Pieces

1: Collar Lining

### Cuff Lay Plan Fabric (Two Layers)

Polyester Satin - 100% Polyester

4oz Polyester Wadding

Marker name: COLLAR LAY PLAN-150  
Utilization: 9.86%

Length: 0m 66.65cm  
Mode/Size/Qty : COLLAR LAY PLAN 12/1

Width: 150.01cm  
Unplaced/Placed: 0/1

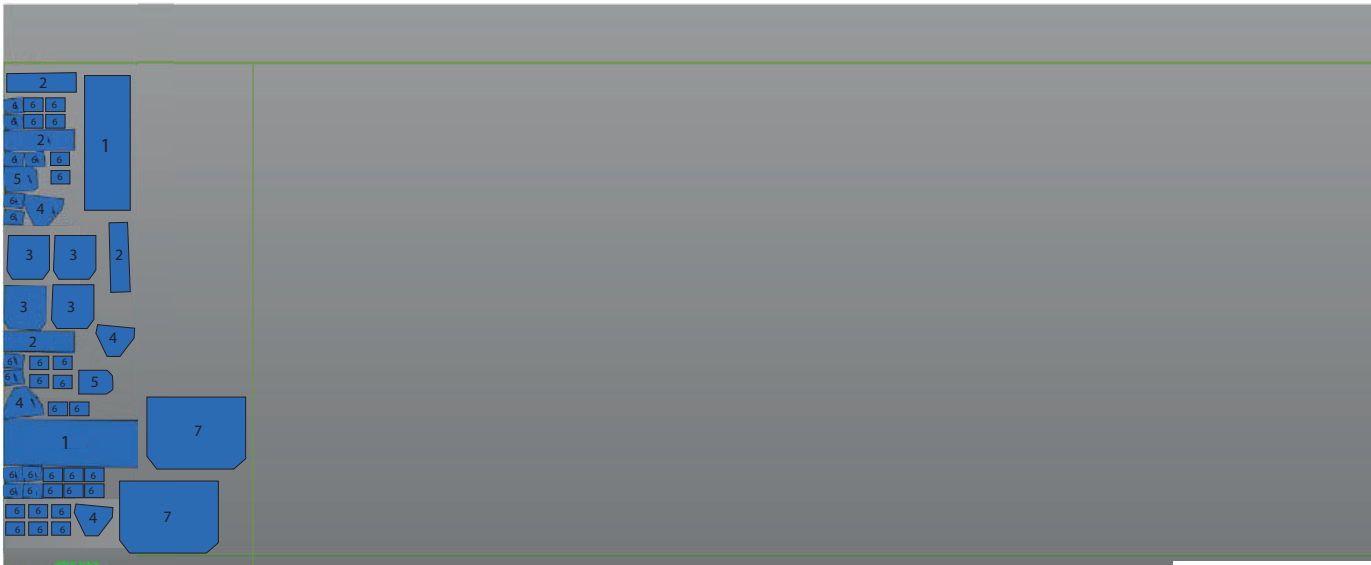
**Designer** Tayler Spring  
**Season** A/W 2021  
**Garment** Adjustable Oversized Puffer Coat

**Collection** Tayler Spring  
**Size Range** 8-10 | 12-14 | 16-18  
**Garment Style Number** TS-020 - 2021

**Page Name** Pocket Lay Plan  
**Issue Date** 01.12.2020  
**Last Updated** 08.12.2020



## Pockets Lay Plan



## Pocket Lay Plan Pieces

- 1: Roll Up Pockets: Base Piece
- 2: Jacket Pocket Flaps
- 3: Roll Up Pockets: Small Pockets
- 4: Roll Up Pockets: Small Pocket Flaps
- 5: Roll Up Pockets: Elasticated Pocket
- 6: Belt Loops
- 7: Main Centre Front Pockets

## Cuff Lay Plan Fabric (Two Layers)

Polyester Satin - 100% Polyester  
Firm non-woven Interfacing

Marker name: ADD ONS-150  
Utilization: 39.21%

Length: 0m 42.27cm  
Model/Size/Qty : ADD ONS 12/1

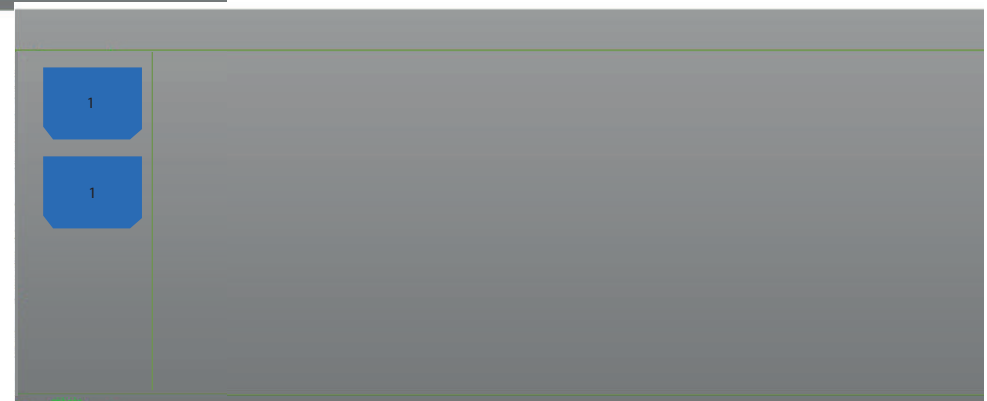
Width: 150.01cm  
Unplaced/Placed: 1/22

## Pocket Lay Plan Pieces

- 1: Main Centre Front Pockets

## Cuff Lay Plan Fabric (Two Layers)

Polyester Satin - 100% Polyester  
(to be smocked)  
Firm non-woven Interfacing



Marker name: ADD ONS-150  
Utilization: 39.21%

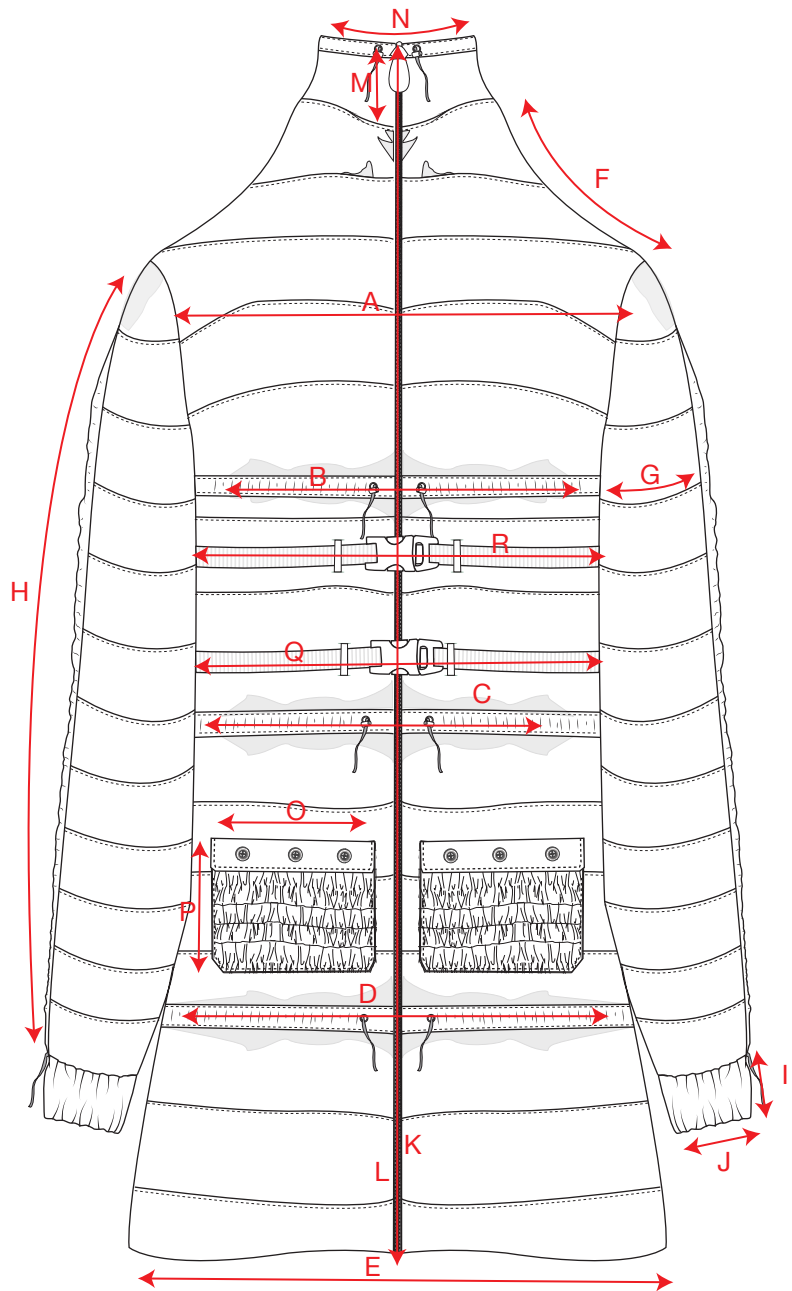
Length: 0m 35.7cm  
Model/Size/Qty : ADD ONS 12/1

Width: 150.01cm  
Unplaced/Placed: 1/22

**Designer** Taylor Spring  
**Season** A/W 2021  
**Garment** Adjustable Oversized Puffer Coat

**Collection** Taylor Spring  
**Size Range** 8-10 | 12-14 | 16-18  
**Garment Style Number** TS -020 - 2021

**Page Name** Critical Path  
**Issue Date** 01.12.2020  
**Last Updated** 08.12.2020

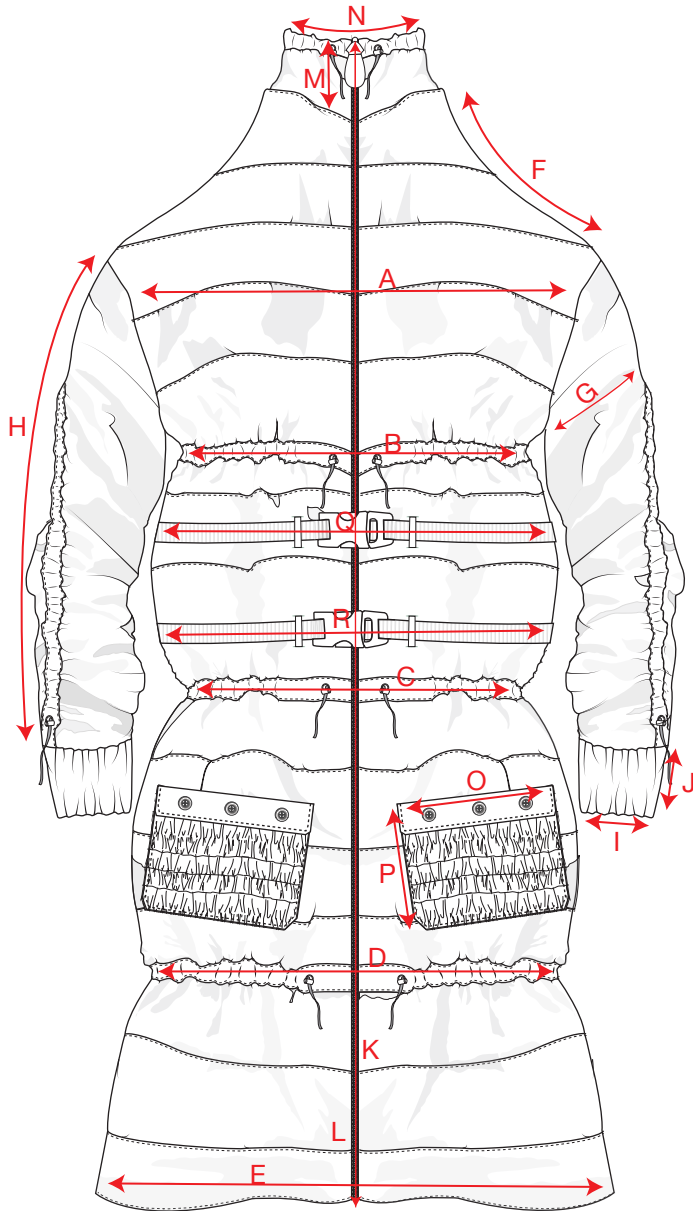


	MEASUREMENTS IN CENTIMETRES	WHERE TO MEASURE FROM	8 - 10 (S)
A	CHEST	30cm from SNP, straight across	56cm
B	CHANNEL #1	Measure across channel	54cm
C	CHANNEL #2	Measure across channel	52cm
D	CHANNEL #3	Measure across channel	50cm
E	HEM	Bottom edge of hem, straight across	50cm
F	SHOULDER	SNP to sleeve head point, along seam	23cm
G	BICEP	10cm down from sleeve head point, then measure across	22cm
H	SLEEVE LENGTH	Sleeve head point to top of cuff	75cm
I	CUFF LENGTH	74cm down from sleeve head, then measure across	12cm
J	CUFF WIDTH	74cm down from sleeve head, then measure to end of cuff	5cm
K	CENTRE BACK LENGTH	Measure from highest collar point, straight down the CB to the hem	125cm
L	CENTRE FRONT LENGTH	Measure from highest collar point, straight down the CF to the hem	125cm
M	COLLAR DEPTH	Measure from lowest collar point, where panels align at zip on CF, to highest point	18cm
N	COLLAR LENGTH AT NECK SEAM	Measure across top of collar	36cm
O	POCKET WIDTH	Measure horizontally across pocket for width	10cm
P	POCKET LENGTH	Measure vertically across pocket for width	10cm
Q	BELT #1 LENGTH	Measure horizontally across belt for length	55cm
R	BELT #2 LENGTH	Measure horizontally across belt for length	55cm

**Designer** Tayler Spring  
**Season** A/W 2021  
**Garment** Adjustable Oversized Puffer Coat

**Collection** Tayler Spring  
**Size Range** 8-10 | 12-14 | 16-18  
**Garment Style Number** TS -020 - 2021

**Page Name** Critical Path  
**Issue Date** 01.12.2020  
**Last Updated** 08.12.2020



	MEASUREMENTS IN CENTIMETRES	WHERE TO MEASURE FROM	8 - 10 (S)
A	CHEST	30cm from SNP, straight across	52cm
B	CHANNEL #1	Measure across channel	45cm
C	CHANNEL #2	Measure across channel	42cm
D	CHANNEL #3	Measure across channel	40cm
E	HEM	Bottom edge of hem, straight across	50cm
F	SHOULDER	SNP to sleeve head point, along seam	23cm
G	BICEP	10cm down from sleeve head point, then measure across	20cm
H	SLEEVE LENGTH	Sleeve head point to top of cuff	50cm
I	CUFF LENGTH	74cm down from sleeve head, then measure across	12cm
J	CUFF WIDTH	74cm down from sleeve head, then measure to end of cuff	5cm
K	CENTRE BACK LENGTH	Measure from highest collar point, straight down the CB to the hem	125cm
L	CENTRE FRONT LENGTH	Measure from highest collar point, straight down the CF to the hem	125cm
M	COLLAR DEPTH	Measure from lowest collar point, where panels align at zip on CF, to highest point	18cm
N	COLLAR LENGTH AT NECK SEAM	Measure across top of collar	24cm
O	POCKET WIDTH	Measure horizontally across pocket for width	10cm
P	POCKET LENGTH	Measure vertically across pocket for width	10cm
Q	BELT #1 LENGTH	Measure horizontally across belt for length	55cm
R	BELT #2 LENGTH	Measure horizontally across belt for length	55cm

**Designer** Taylor Spring

**Season** A/W 2021

**Garment** Adjustable Oversized Puffer Coat

**Collection** Taylor Spring

**Size Range** 8-10 | 12-14 | 16-18

**Garment Style Number** TS -020 - 2021

**Page Name** Critical Path

**Issue Date** 01.12.2020

**Last Updated** 08.12.2020



Garment Size Chart for United Kingdom Consumers (Ruched)

	Size Small (8 - 10)	Size Medium (12 - 14)	Size Large (16 - 18)
Bust	52cm	60cm	67cm
Waist	45cm	53cm	60cm
Hips	42cm	50cm	57cm
Biceps	20cm	21cm	22cm
Cuff Width	5cm	5.5cm	6cm
Cuff Length	12cm	13cm	14cm

Garment Size Chart for United Kingdom Consumers (Relaxed)

	Size Small (8 - 10)	Size Medium (12 - 14)	Size Large (16 - 18)
Bust	56cm	64cm	72cm
Waist	54cm	62cm	70cm
Hips	52cm	60cm	68cm
Biceps	22cm	23cm	24cm
Cuff Width	5cm	5.5cm	6cm
Cuff Length	12cm	13cm	14cm

Garment Size Chart for Spanish Consumers (Ruched)

	Tamaño Pequeña (36 - 38)	Talla Mediana (40 - 42)	Talla larga (44 - 46)
Busto	52cm	60cm	67cm
Cintura	45cm	53cm	60cm
Caderas	42cm	50cm	57cm
Bíceps	20cm	21cm	22cm
Ancho Del Manguito	5cm	5.5cm	6cm
Longitud Del Puño	12cm	13cm	14cm

Garment Size Chart for Spanish Consumers (Relaxed)

	Tamaño Pequeña (36 - 38)	Talla Mediana (40 - 42)	Talla larga (44 - 46)
Busto	56cm	64cm	72cm
Cintura	54cm	62cm	70cm
Caderas	52cm	60cm	68cm
Bíceps	22cm	23cm	24cm
Ancho Del Manguito	5cm	5.5cm	6cm
Longitud Del Puño	12cm	13cm	14cm

**Designer** Tayler Spring  
**Season** A/W 2021  
**Garment** Adjustable Oversized Puffer Coat

**Collection** Tayler Spring  
**Size Range** 8-10 | 12-14 | 16-18  
**Garment Style Number** TS -020 - 2021

**Page Name** Bill Of Materials  
**Issue Date** 01.12.2020  
**Last Updated** 08.12.2020



Webbing - cm (Pastel Yellow)	Supplier: Hot Pink Haberdashery	Amount Needed: 2 Metre	Fabric Properties: Polypropylene	
	Use For: To create belts	Cost Per Metre: £0.40p	Total Costing: £0.80p	
Webbing - 3cm (Pastel Pink)	Supplier: Hot Pink Haberdashery	Amount Needed: 6 Metre	Fabric Properties: Polypropylene	
	Use For: To create channels	Cost Per Metre: £0.40p	Total Costing: £2.40	
Side Release Buckles (Pastel blue)	Supplier: Ray Stitch	Amount Needed: 2 Buckles	Fabric Properties: Heavy Duty Plastic	
	Use For: Belt Fastenings	Cost Per Buckle: £3.70	Total Costing: £7.40	
Wax Cord (Turquoise)	Supplier: Jilly Beads	Amount Needed: 6 Metres	Fabric Properties: Waxed Cotton Cord (3g)	
	Use For: Channel Cords	Cost Per Metre: £0.10	Total Costing: £0.60	
2 Way Open-Ended Zip (5mm Teeth)	Supplier: A & N Trimmings	Zip Length: 150cm	Zip Properties: Polished Silver Finish	
	Use For: CF Zip	Cost Per Metre: £23.96	Total Costing: £51.87	
Cord Stoppers (White)	Supplier: MY Fabrics	Amount Needed: 10 Stoppers	Stopper Properties: 100% Polyester	
	Use For: Wax Cord Tightening	Cost Per Cord Stopper: £1.55	Total Costing: £15.50	
Interfacing (Firm)	Supplier: Stabler International	Amount Needed: 1 Metre	Fabric Properties: Firm Standard Iron On	
	Use For: Pockets	Cost Per Metre: £5.00	Total Costing: £5.00	
Elastic (1mm)	Supplier: Charming Beads	Amount Needed: 1 Metre	Fabric Properties: White Elastic 1mm	
	Use For: Elasticated Pockets	Cost Per Roll: £2.39	Total Costing: £2.39	
Elastic (40mm)	Supplier: Minerva	Amount Needed: 1 Metre	Fabric Properties: White Elastic 40mm	
	Use For: Pockets	Cost Per Metre: £4.39	Total Costing: £4.39	
Quilting Services	Service Provider: Quilt Sanctuary	Amount Needed: 4 Metres		
	Use For: Quilting Wadding and Satin	Total Costing: £200		

Polyester Satin (Pastel Green)	Supplier: Pongees London	Amount Needed: 4 Metres	Fabric Properties: 100% Polyester	
	Use For: Main Body Pattern Pieces	Cost Per Metre: £31.88	Total Costing: £127.52	
Polyester Satin (Pastel Blue)	Supplier: Pongees London	Amount Needed: 1 Metre	Fabric Properties: 100% Polyester	
	Use For: Cuffs and Pocket Pieces	Cost Per Metre: £31.88	Total Costing: £31.88	
Polyester Satin (Pastel Yellow)	Supplier: Pongees London	Amount Needed: 1 Metre	Fabric Properties: 100% Polyester	
	Use For: Collar Piece	Cost Per Metre: £31.88	Total Costing: £31.88	
Silk Habotai (Pastel Pink)	Supplier: Pongees London	Amount Needed: 3 Metre	Fabric Properties: Soft Noble Sheen	
	Use For: Lining Pieces	Cost Per Metre: £17.29	Total Costing: £51.87	
Polyester Wadding (8oz - 230g)	Supplier: Heart Educational	Amount Needed: 4 Metre	Fabric Properties: Synthetic	
	Use For: Sleeves and Main Body	Cost Per Metre: £3.16	Total Costing: £12.64	

Total Price for BOM: £541.16	RRP: £750 = Profit Per Garment: £208.84
---------------------------------	--

# BILL OF MATERIALS



**Designer** Tayler Spring  
**Season** A/W 2021  
**Garment** Adjustable Oversized Puffer Coat

**Collection** Tayler Spring  
**Size Range** 8-10 | 12-14 | 16-18  
**Garment Style Number** TS -020 - 2021

**Page Name** Manufacturing Proposal

**Issue Date** 01.12.2020

**Last Updated** 08.12.2020



Manufacturing Proposal

*"House of colour"*

This collection is a reaction to the overwhelming impact COVID-19 has had on the mental health of those who have been infected. Both Spain and the United Kingdom have battled greatly with high levels of COVID-19 cases. Reacting this information, this garment will aim to target people of these demographics.

Specifically targeting a middle to high end market level, this garment will be manufactured in a private studio at Tayler Spring Designs, South London. The team within this studio consists of 2 designers, 3 design assistants and a team of 5 enthusiastic interns. Due to the small team, more care and detail will be put into each product made at Tayler Spring Designs. For this garment, the marketing strategy will focus on exclusivity. The garment will not be highly marketed, and therefore only a few samples will be made to start of with, focusing on sizes 8-10 and a few in sizes 10-12. As the production method will be one-off, each garment will reflect the intricate and precise details put into the manufacturing process. Another advantage to the one-off production of this garment is that they can be made to order, which means the client may decide how oversized they wish the garment to be, and how much, if any, they want to ruche the garment up by. We as a team will take these measurements into account to produce a garment that meets every customer need - this is the aim of this garment, to make sure that the customer is satisfied in every way possible by their purchase and that all their requirements have been taken into account when placing an order.

We have also extended our services to a small boutique in Madrid, a highly infected city for Coronavirus. We will make the samples in our London Boutique for clients who are looking for that extra attention to detail fit and finish. For clients who are looking for a standard size without any custom fit or change in colour and finishes (such as different zips, cords or stoppers) will have their garment produced in a factory just outside of Madrid. The production within this factory will be quicker than our London Studio, however, the SMS Production will take longer than custom made UK garments due to the quality control we pride ourselves on when our garments are sent to batch production. This will not be offered to consumers within the United Kingdom as we pride ourselves on in-house production in the UK. As a team, we have worked closely with our clients on multiple occasions, which has given us an understanding into their fit, needs and desires when purchasing our bespoke garments. This is why we choose to continue to operate in house for UK consumers, as our production outside of Madrid is specifically for this garment and our collaboration with a Spanish boutique who are wanting to stock our product for their consumers.

Spanish consumers will be able to purchase the garment in store, right away, available in sizes 8-10, 10-12, 12-14 (the boutique will stock 5 of each size at a time and after this more will be produced). These sizes will be in the originally display garment, the same colour, fit and finish. Our London production however, will take up to 3 week to produce. This is due to multiple variables, the first one being client satisfaction. We will explain the concept of our garment to our clients, and ask what it is they are looking to achieve through wearing it, be it a sense of security or to brighten their mood. We will then discuss colour options with our client. It also needs to be taken into account that to produce the best quilting possible, we will send off our satin and wadding to a simplest that we have worked closely with on multiple occasions - the turn around time for this will be a week. After this it takes about a week and a half in production before the garment will be fully completed, as details is paramount to client satisfaction, to our satisfaction and to making sure that the garment reacts to the purpose of helping those with anxiety due to COVID-19 feel better when they put it on.

Our fabric will come from a small shop on Berwick Street, London that we use for the majority of our orders, they are able to order in materials if they do not have, and the turn around time from ordering to receiving materials takes up to 2 working days. Our trimmings are also sourced from a bespoke shop on Berwick Street, London that have an in-house storage facility of their supplies. There should be no production issue of our clientele exceeds our expectations, however if this does happen for any reason, we will source our materials from our supplier in Manchester that we have used when creating garments through batch production.

We look forward to exceeding our client's expectations and helping them use this garment as a coat of armour when entering society and struggling with their anxiety. However we also understand that this garment may appeal to those who prefer to be wrapped up and warm, that may be our target demographic of covid-19 survivors but just wish to purchase an oversized, adjustable, personally tailored garment.

**Designer** Tayler Spring

**Season** A/W 2021

**Garment** Adjustable Oversized Puffer Coat

**Collection** Tayler Spring

**Size Range** 8-10 | 12-14 | 16-18

**Garment Style Number** TS -020 - 2021

**Page Name** Critical Path

**Issue Date** 01.12.2020

**Last Updated** 08.12.2020



### Critical Path for Custom Client Garment (One-Off Production)

	Week One	Week Two	Week Three
Show client design of garment fabrics and mood boards specific to them	■		
Take Client's Measurements	■		
Take in any garment alterations that the client wishes (e.g. different colours, pocket styles or length of garment)	■		
Toile Garment		■	
Ask client to come in for fittings		■	
Source Fabric and Lay Plan		■	
Construct Final Garment		■	■
Bring in client - make sure they are satisfied with final garment			■
Hand garment over to client and take final payment			■

**Produced In-House**

### Critical Path for Madrid Boutique (Batch Production)

	Week One	Week Two	Week Three	Week Four	Week Five	Week Six
Designs Finalised	■					
First Prototype Constructed	■	■				
Fittings		■				
Alterations for 1st Proto		■	■			
Prototype Amendments/ Strike Offs			■			
Update Tech Packs	■	■	■			
Lay Plan		■	■			
Update Tech Pack for Factory	■	■	■			
SMS Production (Sent to Factory)			■	■		
Sample back from factory				■		
Final Alterations and fittings				■		
Final sample sent to Madrid Factory				■		
Batch Production of garment in Madrid Factory				■	■	■
Samples Arrive in Madrid Boutique						■

**Produced In Factory**

**Designer** Tayler Spring  
**Season** A/W 2021  
**Garment** Adjustable Oversized Puffer Coat

**Collection** Tayler Spring  
**Size Range** 8-10 | 12-14 | 16-18  
**Garment Style Number** TS -020 - 2021

**Page Name** Critical Path  
**Issue Date** 01.12.2020  
**Last Updated** 08.12.2020



**Critical Path for Industry Project**

	Week One	Week Two	Week Three	Week Four	Week Five	Week Six
Research						
Design Development						
Updating Process Journal						
Fabric Sourcing						
Toiling						
Make sure patterns are finalised and start lay plan						
Producing Final Garment						
Updating Tech Pack						
Finalising Process Journal						
Shooting Garment						
Final Boards						
Film						